



#1 in R.O.I. Up to 90% CO-OP + FREE CO-OP FILING!

Harvest of Savings!

Event Dates 9/29 Thru 10/31

Start Event 9/29 - Order by 9/13

Start Event 10/7 - Order by 9/21

Start Event 10/14 - Order by 9/28

- Models shown are MAP LESS 10% - you decide your prices
- ANY Model Changes - art will be pre-approved by HUB/Marketing Playbook qualified
- FREE HUB filing if checked on order form

Mailer Choices

1. The Monster Mailer tri-fold Arrives in mail 6" x 10.5" and opens to 10.5" x 17" Only **40.9 Cents**.
2. The Legal Limit MAX Postcard 11"x 14" - The Largest Piece of Mail Allowed by Law! Only **43.9 Cents**.
3. The Jumbo Card 6" x 9" Only **37.9 Cents**. From \$799 all Inclusive.

All orders Include art with any Edits, Single Family Postage, Printing, Our Mailing List with Home Owner Median Incomes to "Target", Addressing & Shipping to Dealer's Local Post Office for In-Home Delivery.

Option - Use your store customer list – no charge to clean list - ask for details.

Add the "Scratch Off" Promotion - 4 Cents extra. – Includes Scratch Off Sticker with Prize Numbers, \$10,000 Group Insurance Policy, (3) \$250 Your Store Gift Certificates (zero dealer liabilities), and your option to add your own default prizes such as a Free 10-Year Component warranty with purchase - or additional \$10 - \$50 Instant Savings, Mounted Prize Board & extra mailers for walk in traffic.

Contact 800-770-5219

Bill Menkhus bill_menkhus@invigoratemedia.com Cell 636-524-1240

Doug Nelson doug_nelson@invigoratemedia.com Cell 636-578-8130

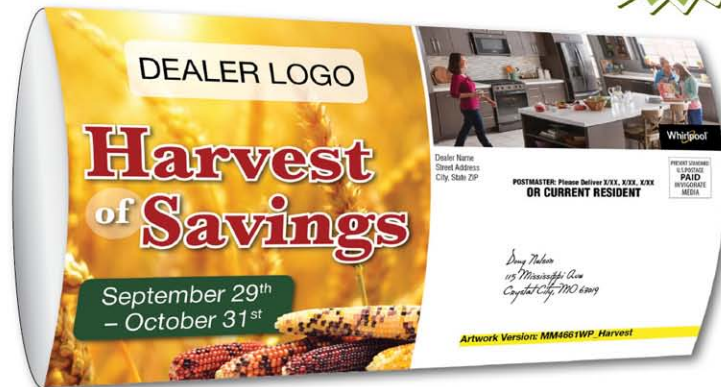
The Monster Mailer Tri-Fold

Proven by
Monstrous Results

Arrives in the
mailbox as
6" x 10.5"
Opens to
10.5" x 17"

10.5 INCHES WIDE

17 INCHES TALL



295% BIGGER Than our
Jumbo Postcard!

As low as
40.9¢ Includes
Postage



KitchenAid®

RECEIVE UP TO

\$1500*

*Visa® Prepaid card by mail when you purchase select KitchenAid Brand Appliances. July 1 - December 31, 2021

KitchenAid®

**4-PIECE KITCHENAID®
STAINLESS STEEL KITCHEN SUITE**



20 cu.ft. Counter-Depth French Door Refrigerator with Interior Water Dispenser
KRFC300ESS



8.4 cu.ft. Electric Range with Even-Heat™ True Convection
KFEG500ESS



1000 Watt Microwave Hood Combination with Sensor Functions
KMHS120ESS

46 DBA Stainless Steel Dishwasher with ProWash™ Cycle
KDFE104KPS

MSRP \$5546

\$4991

**PLUS
\$400 MAIL-IN
REBATE!**

**SAVE \$555
ON THE PACKAGE!**

DEALER LOGO

**Harvest
of Savings**

September 29th
– October 31st

AMANA® Whirlpool® MAYTAG® KitchenAid®

Scratch & Win™

Match your number in our store to see if you're our grand prize winner!



- \$10,000 Shopping Spree
- \$250 Store Gift Certificate
- \$25 – \$50 Additional Instant Savings on purchases \$499 and up

Dealer Name
Street Address
City, State ZIP

**POSTMASTER: Please Deliver X/XX, X/XX, X/XX
OR CURRENT RESIDENT**

PRESORT STANDARD
U.S. POSTAGE
PAID
INVIGORATE
MEDIA

*Doug Nelson
115 Mississippi Ave
Crystall City, MO 63019*

Artwork Version: MM4661WP_Harvest

MAYTAG®

**4-PIECE MAYTAG®
STAINLESS STEEL KITCHEN SUITE**



MSRP \$4096

\$3686



**SAVE \$410
ON THE PACKAGE!**

25 cu.ft. Side-by-Side Refrigerator with Exterior Ice & Water Dispenser
MSS25C4MGZ

1.7 cu.ft. Over-the-Range Microwave with Stainless Steel Cavity
MMV1175JZ

6.4 cu.ft. Electric Range with True Convection
MER8800FZ

Stainless Steel Tub Dishwasher with PowerBlast® Cycle
MDB4949SKZ

12 MONTHS SPECIAL FINANCING!*



4-PIECE WHIRLPOOL®
STAINLESS STEEL KITCHEN SUITE



MSRP \$3496

\$3146



SAVE \$350
ON THE PACKAGE!

25 cu.ft. Side-by-Side Refrigerator with Frameless Glass Shelves
WRS325SDHZ

1.7 cu.ft. Microwave Hood Combination with Electronic Touch Controls
WMH31017HZ

5.3 cu.ft. Electric Range with Frozen Bake™ Technology
WFE515SQJS

Stainless Steel Dishwasher with Sensor Cycle
WDF540PADM

MSRP \$799
\$719 washer
MAYTAG®
MSRP \$749
dryer \$674

MAYTAG®
\$899 each
MSRP \$999



SAVE \$155 ON THE PAIR!

4.2 cu.ft. Top Load Washer with the Deep Water Wash Option
MVWC565FW

7.0 cu.ft. Electric Dryer with Heavy Duty Motor
MEDC465HW



5 Year Parts & Labor Included!

SAVE \$200 ON THE PAIR!

3.5 cu.ft. Commercial-Grade Residential Washer with Dual-Action Agitator
MVWP575GW

7.4 cu.ft. Commercial-Grade Residential Electric Dryer with Premium Motor
MEDP575GW



SAVE \$140 ON THE PAIR!

Whirlpool®
\$629 each
MSRP \$699

3.8 cu.ft. Top Load Washer with Soaking Cycles
WTW4955HW

7.0 cu.ft. Electric Dryer with AutoDry™ Drying System
WED4950HW

DUE TO UNPRECEDENTED
PRODUCT DEMAND,
SOME MODELS MAY TAKE
LONGER TO ARRIVE.
REST ASSURED, WE WILL
ALWAYS OFFER YOU THE
VERY LOWEST PRICES –
GUARANTEED!



DEALER TAG

*See store for complete details on all offers, financing and rebates. Visit maytag.com for warranty details. **Employees of retailer, mail-house, associate sponsors and ad agency as well as their family members of the same household are not eligible. Restrictions apply. No purchase necessary. Odds of winning \$10,000 Shopping Spree 1:350,000; \$250 Store Gift Certificate 3:XX,XXX; Additional Discounts on minimum purchase of \$499 and above: \$25 XX-XX,XXX; \$30 XX-XX,XXX; \$50 XX-XX,XXX. Mail piece must be presented to a representative of our store to participate in all offers of this mail piece. Participant must be 18 years of age or older, a legal U.S. Citizen, have a valid U.S. Driver's License and be a recipient of the mail piece via U.S. Mail. Winning numbers are predetermined. Winning numbers will not be disclosed over the telephone. Only valid during event dates and hours. VOID WHERE PROHIBITED BY LAW. ®/™ ©2021. All rights reserved. MM4651WP_Harvest XXXXX cheilert ©2021 Invigorate Media, LLC. All Rights Reserved.

The Legal Limit **MAX!** Postcard

Anything bigger would be criminal.

14 INCHES **WIDE**
HUGE!

DEALER LOGO

Harvest of Savings

September 29th - October 31st

KitchenAid

RECEIVE UP TO **\$1500***

*Valid Prepaid card by mail when you purchase select KitchenAid Brand Appliances. July 1 - December 31, 2021

MAYTAG 4-PIECE MAYTAG® STAINLESS STEEL KITCHEN SUITE

\$3686

SAVE \$410 ON THE PACKAGE

12 MONTHS SPECIAL FINANCING!

KitchenAid 4-PIECE KITCHENAID® STAINLESS STEEL KITCHEN SUITE

\$4991

SAVE \$555 ON THE PACKAGE

YOUR MAIL-IN REBATE

Whirlpool

4-PIECE WHIRLPOOL® STAINLESS STEEL KITCHEN SUITE

\$3146

SAVE \$350 ON THE PACKAGE

DEALER NAME
Street Address
City, State Zip

POSTMASTER: Please Deliver XXX, XXX, XXX OR CURRENT RESIDENT

Don't Miss Out on Mississippi's Best Computer Deal 2021

Artwork Version: LM4660WP Harvest!

Scratch & Win

Match your number in our state to see if you're one grand prize winner!

- \$10,000 Shopping Spree
- 250 Store Gift Certificate
- 25 - \$50 Additional Instant Savings

Whirlpool

\$629 each

SAVE \$140 ON THE PAIR

3.8 cu.ft. Top Load Washer with Soaking Cycles

7.0 cu.ft. Electric Dryer with AutoDry® Drying System

DUE TO UNPRECEDENTED PRODUCT DEMAND, SOME MODELS MAY TAKE LONGER TO ARRIVE. REST ASSURED, WE WILL ALWAYS OFFER YOU THE VERY LOWEST PRICES - GUARANTEED!

DEALER TAG

11 INCHES TALL

The **LARGEST** piece of mail the US Postal Service will allow!

As low as
43.9¢
Includes Postage

255% BIGGER Than our Jumbo Postcard!

DEALER LOGO

Harvest of Savings

September 29th
– October 31st



KitchenAid®

RECEIVE
UP TO **\$1500***

*Visa® Prepaid card by mail when you purchase select KitchenAid Brand Appliances. July 1 - December 31, 2021

MAYTAG®

**4-PIECE MAYTAG®
STAINLESS STEEL KITCHEN SUITE**



MSRP \$4096

\$3686



**SAVE \$410
ON THE PACKAGE!**

25 cu.ft. Side-by-Side Refrigerator with Exterior Ice & Water Dispenser
MSS25C4MGZ

1.7 cu.ft. Over-the-Range Microwave with Stainless Steel Cavity
MMV1175JZ

6.4 cu.ft. Electric Range with True Convection
MER8800FZ

Stainless Steel Tub Dishwasher with PowerBlast® Cycle
MDB4949SKZ

12 MONTHS SPECIAL FINANCING!

KitchenAid®

**4-PIECE KITCHENAID®
STAINLESS STEEL KITCHEN SUITE**



MSRP \$5546

\$4991

**PLUS
\$400 MAIL-IN
REBATE!**

**SAVE \$555
ON THE PACKAGE!**

20 cu.ft. Counter-Depth French Door Refrigerator with Interior Water Dispenser
KRFC300ESS

1000 Watt Microwave Hood Combination with Sensor Functions
KMHS120ESS

8.4 cu.ft. Electric Range with Even-Heat™ True Convection
KFE6500ESS

46 DBA Stainless Steel Dishwasher with ProWash™ Cycle
KDFE104KPS

Whirlpool®

4-PIECE WHIRLPOOL® STAINLESS STEEL KITCHEN SUITE



**SAVE \$350
ON THE PACKAGE!**

MSRP \$3496

\$3146



25 cu.ft. Side-by-Side Refrigerator
with Frameless Glass Shelves
WRS325SDHZ

5.3 cu.ft. Electric Range
with Frozen Bake™ Technology
WFE515SDJS

1.7 cu.ft. Microwave Hood Combination
with Electronic Touch Controls
WMH31017HZ

Stainless Steel Dishwasher
with Sensor Cycle
WDF540PADM

MSRP \$799 **MAYTAG®** MSRP \$749
\$719 washer **\$674** dryer



SAVE \$155 ON THE PAIR!

4.2 cu.ft. Top Load Washer
with the Deep Water Wash Option
MVWC565FW

7.0 cu.ft. Electric Dryer
with Heavy Duty Motor
MEDC465HW

MAYTAG® **\$899** MSRP \$999 each



5 Year Parts & Labor Included!

SAVE \$200 ON THE PAIR!

3.5 cu.ft. Commercial-Grade Residential Washer
with Dual-Action Agitator
MVWP575GW

7.4 cu.ft. Commercial-Grade Residential Electric Dryer
with Premium Motor
MEDP575GW

DEALER TAG

Dealer Name
Street Address
City, State Zip

**POSTMASTER: Please Deliver X/XX, X/XX, X/XX
OR CURRENT RESIDENT**

PRESORT STANDARD
U.S. POSTAGE
PAID
INVIGORATE
MEDIA

*Doug Nelson
115 Mississippi Ave
Crystal City, MO 63019*

Artwork Version: LM4660WP_Harvest



Whirlpool®

\$629 MSRP \$699 each

3.8 cu.ft. Top Load Washer
with Soaking Cycles
WTW4955HW

7.0 cu.ft. Electric Dryer
with AutoDry™ Drying System
WED4950HW

SAVE \$140 ON THE PAIR!

**DUE TO UNPRECEDENTED PRODUCT DEMAND,
SOME MODELS MAY TAKE LONGER TO ARRIVE.
REST ASSURED, WE WILL ALWAYS OFFER YOU THE
VERY LOWEST PRICES – GUARANTEED!**

The Jumbo Postcard

DEALER LOGO

Harvest of Savings

September 29th
– October 31st



Save Big

on Select Whirlpool, Maytag
& Amana Kitchen Packages!

AMANA

Whirlpool

MAYTAG

KitchenAid

**DUE TO UNPRECEDENTED PRODUCT DEMAND, SOME MODELS
MAY TAKE LONGER TO ARRIVE. REST ASSURED, WE WILL ALWAYS
OFFER YOU THE VERY LOWEST PRICES – GUARANTEED!**

Whirlpool®

\$629 MSRP \$699
each



3.8 cu.ft. Top Load Washer with Soaking Cycles

WTW4955HW

7.0 cu.ft. Electric Dryer with AutoDry™ Drying System

WED4950HW

MAYTAG®

\$899 MSRP \$999
each



3.5 cu.ft. Commercial-Grade Residential Washer with Dual-Action Agitator

MVWP675GW

7.4 cu.ft. Commercial-Grade Residential Electric Dryer with Premium Motor

MEDP675GW

KitchenAid®

RECEIVE UP TO
\$1500*

*Visa® Prepaid card by mail when you purchase select KitchenAid Brand Appliances
(July 1 - December 31, 2021)



Dealer Name
Street Address
City, State ZIP

**POSTMASTER: Please Deliver X/XX, X/XX, X/XX
OR CURRENT RESIDENT**

PRESORT STANDARD
U.S. POSTAGE
PAID
INVIGORATE
MEDIA

12 MONTHS SPECIAL FINANCING!

DEALER TAG

*See store for complete details of all offers, financing and rebates. Visit maytag.com for warranty details. ©/™ © 2021. All rights reserved. JP4662WP_Harvest cheilert ©2021 Invigorate Media, LLC. All Rights Reserved.

*Doug Nelson
115 Mississippi Ave
Crestat City, MO 63019*

Artwork Version: JP4662WP_Harvest

MODEL LIST : MONSTER MAILER

Sept 29–Oct 31
Harvest of Savings

**Some models may not appear on smaller mailers*

Prices are set at lowest co-opable prices.

Brand	KitchenAid	Model #	Kitchen	MSRP	\$5546	SALE PRICE	\$4991
Brand	KitchenAid	Model #	KRFC300ESS	MSRP		SALE PRICE	
Brand	KitchenAid	Model #	KFEG500ESS	MSRP		SALE PRICE	
Brand	KitchenAid	Model #	KMHS120ESS	MSRP		SALE PRICE	
Brand	KitchenAid	Model #	KDFE104KPS	MSRP		SALE PRICE	
Brand	Maytag	Model #	Kitchen	MSRP	\$4096	SALE PRICE	\$3686
Brand	Maytag	Model #	MSS25C4MGZ	MSRP		SALE PRICE	
Brand	Maytag	Model #	MMV1175JZ	MSRP		SALE PRICE	
Brand	Maytag	Model #	MER8800FZ	MSRP		SALE PRICE	
Brand	Maytag	Model #	MDB4949SKZ	MSRP		SALE PRICE	
Brand	Whirlpool	Model #	Kitchen	MSRP	\$3496	SALE PRICE	\$3146
Brand	Whirlpool	Model #	WRS325SDHZ	MSRP		SALE PRICE	
Brand	Whirlpool	Model #	WMH31017HZ	MSRP		SALE PRICE	
Brand	Whirlpool	Model #	WFE515S0JS	MSRP		SALE PRICE	
Brand	Whirlpool	Model #	WDF540PADM	MSRP		SALE PRICE	
Brand	Maytag	Model #	MVWC565FW	MSRP	\$799	SALE PRICE	\$719
Brand	Maytag	Model #	MEDC465HW	MSRP	\$749	SALE PRICE	\$674
Brand	Maytag	Model #	MVWP575GW	MSRP	\$999	SALE PRICE	\$899
Brand	Maytag	Model #	MEDP575GW	MSRP	\$999	SALE PRICE	\$899
Brand	Whirlpool	Model #	WTW4955HW	MSRP	\$699	SALE PRICE	\$629
Brand	Whirlpool	Model #	WED4950HW	MSRP	\$699	SALE PRICE	\$629



Monster Mailer • Legal Limit Max • Jumbo Postcard

Order Form

Email orders to: **ORDER@InvigorateMedia.com**

or Fax orders to: **636-794-3223**

Sales: **1-800-770-5219** Doug Nelson or Bill Menkhus

Business Name: _____ Contact Name: _____

Address: _____ City: _____ State: _____ Zip: _____

Phone: _____ Cell: _____ Email: _____

Buying Group: _____ Whirlpool Rep: _____

Whirlpool Dealers - Want us to file your HUB co-op paperwork on your behalf? ☐ YES!

Are you Whirlpool Exclusive? ☐ YES! **HUB Log-in Username:** _____ **Password:** _____

Step 1

Sale Dates

Indicate your sale dates here:

Step 2

Please List Artwork Version Number

Artwork Version in white address panel,
ie Version: LL2041WP; 01MM954X)

Indicate number here: _____

Do you want Scratch Off Promo? ☐ Yes ☐ No **(Scratch Off Promo: Add 4 cents per mailer)**

Step 3

Quantity Single Family Homes: **Select One**

Monster Mailer ☐ 1. 5,000 - \$2,493 ☐ 2. 10,000 - \$4,239

Legal Limit MAX! ☐ 1. 5,000 - \$2,643 ☐ 2. 10,000 - \$4,539

Jumbo Postcard Pricing:

☐ 1. 1,000 - \$799 ☐ 2. 2,000 - \$1,399

☐ 3. 3,000 - \$1,829 ☐ 4. 4,000 - \$2,139

☐ 5. 5,000 - \$2,343 ☐ 6. 10,000 - \$3,939

Additional Mailers, ADD: MONSTER - 40.9¢ each

LEGAL LIMIT MAX - 43.9¢ each • JUMBO POSTCARD - 37.9¢ each (on quantities over 5,000)

Step 4

Financing & Special Offers: *All offers are solely the retailer's responsibility.* ie. Financing, Rebates, Free Delivery, etc.

Financing offer terms - # of Months ie. 6, 12, 18 _____; With Payments? YES or NO; Minimum Purchase: \$ _____;

List your special offers here: _____

Step 5

Signature (REQUIRED): _____ (Your order will not be processed without a signature)

Invigorate Media has no responsibility for, nor may payment be contingent upon, availability of featured merchandise. Invigorate Media shall not be responsible for nondelivery or damage to printed materials owing to acts of God, strikes, shipping failures, timeliness of post office or any other causes beyond its control. Direct mail costs are based on US postal rates as of May 2020 and are subject to change without notice.

Step 6

Select ONE: ☐ 1. Zip Codes - Complete Below **OR** ☐ 2. Let us run a radius around your store

Call us for free consultation on selecting your mailing list

1.	2.	3.	4.	5.
6.	7.	8.	9.	10.

Pricing Includes: \$50,000+ Household Median Income

• Single Family Home Mailing List

Monster 10.5" x 17" • Legal Limit Max! 11" x 14" • Jumbo Postcard 6" x 9"

• Single Family Home Postage

Monster Mailer/Jumbo Postcard: Targeted Homeowner Income List OR Dealer's Customer List: Add 5¢
Legal Limit Max: Targeted Homeowner Income List OR Dealer's Customer List: Add 7¢

Add'l SCFs: Add \$100

List your model changes below

Fax 2nd page with your Order Form

List your model changes below. Models NOT DELETED will remain on your proof. The space allowed for models/images is limited to the direct mail piece selected

1. **DELETE:** Brand _____ Model # _____ **REPLACE WITH:** Brand _____ Model # _____
CHANGE PRICE TO: \$ _____ and/or **CHANGE SAVE TO:** \$ _____
2. **DELETE:** Brand _____ Model # _____ **REPLACE WITH:** Brand _____ Model # _____
CHANGE PRICE TO: \$ _____ and/or **CHANGE SAVE TO:** \$ _____
3. **DELETE:** Brand _____ Model # _____ **REPLACE WITH:** Brand _____ Model # _____
CHANGE PRICE TO: \$ _____ and/or **CHANGE SAVE TO:** \$ _____
4. **DELETE:** Brand _____ Model # _____ **REPLACE WITH:** Brand _____ Model # _____
CHANGE PRICE TO: \$ _____ and/or **CHANGE SAVE TO:** \$ _____
5. **DELETE:** Brand _____ Model # _____ **REPLACE WITH:** Brand _____ Model # _____
CHANGE PRICE TO: \$ _____ and/or **CHANGE SAVE TO:** \$ _____
6. **DELETE:** Brand _____ Model # _____ **REPLACE WITH:** Brand _____ Model # _____
CHANGE PRICE TO: \$ _____ and/or **CHANGE SAVE TO:** \$ _____
7. **DELETE:** Brand _____ Model # _____ **REPLACE WITH:** Brand _____ Model # _____
CHANGE PRICE TO: \$ _____ and/or **CHANGE SAVE TO:** \$ _____
8. **DELETE:** Brand _____ Model # _____ **REPLACE WITH:** Brand _____ Model # _____
CHANGE PRICE TO: \$ _____ and/or **CHANGE SAVE TO:** \$ _____
9. **DELETE:** Brand _____ Model # _____ **REPLACE WITH:** Brand _____ Model # _____
CHANGE PRICE TO: \$ _____ and/or **CHANGE SAVE TO:** \$ _____
10. **DELETE:** Brand _____ Model # _____ **REPLACE WITH:** Brand _____ Model # _____
CHANGE PRICE TO: \$ _____ and/or **CHANGE SAVE TO:** \$ _____
11. **DELETE:** Brand _____ Model # _____ **REPLACE WITH:** Brand _____ Model # _____
CHANGE PRICE TO: \$ _____ and/or **CHANGE SAVE TO:** \$ _____
12. **DELETE:** Brand _____ Model # _____ **REPLACE WITH:** Brand _____ Model # _____
CHANGE PRICE TO: \$ _____ and/or **CHANGE SAVE TO:** \$ _____
13. **DELETE:** Brand _____ Model # _____ **REPLACE WITH:** Brand _____ Model # _____
CHANGE PRICE TO: \$ _____ and/or **CHANGE SAVE TO:** \$ _____