



Contact Invigorate Media 800-770-5219

Whirlpool Brands!

Pre-Approved! 100% CO-OP & FREE CO-OP FILING!

Whirlpool Brands Holiday Sale!

Targeted Direct Mail is the most Effective Method for Driving Immediate Store Traffic & Sales.

Make ANY Changes to art - Prices/Models/Brands. We will re-approve for 100% co-op!

ORDER DEADLINES: Holiday Sale!

Dates: December 7 - December 20
Start Sale December 7 - Order by November 20
Start Sale December 14 - Order by November 27

Choose from Three Sizes

1. **The Monster Mailer tri-fold** Arrives in mail 6" x 10.5" and opens to 10.5" x 17" **Only 37.9 Cents.**
2. **The Legal Limit MAX Postcard 11"x 14"** - The Largest Piece of Mail Allowed by Law! **Only 39.9 Cents.**
3. **The Jumbo Card 6" x 11"** **Only 35.9 Cents.**

All orders Include art with Edits, Single Family Postage, Printing, Our Mailing List with Home Owner Median Incomes to "Target", Addressing & Shipping to Dealer's Local Post Office for In-Home Delivery.

Option - Use your store customer list – ask for details.

We will file your HUB co-op paper work for you if indicated on attached order form.

Add the "Scratch Off" Promotion to either mailer/3 Cents extra. - Includes Scratch Off Sticker with Prize Numbers, \$10,000 Group Insurance Policy, (3) Kitchen-Aid Stand Mixers (zero dealer liabilities), and your option to add your own default prizes such as a Free 10-Year Component warranty with purchase - or additional \$10 - \$50 Instant Savings, Mounted Prize Board & extra mailers for walk in traffic.

Contact 800-770-5219

Bill Menkhus bill_menkhus@invigoratemedia.com Cell 636-524-1240
Doug Nelson doug_nelson@invigoratemedia.com Cell 636-578-8130

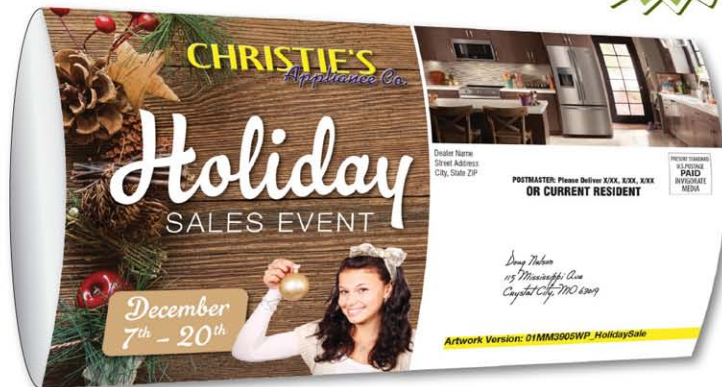
The Monster Mailer Tri-Fold

Proven by
Monstrous Results

Arrives in the
mailbox as
6" x 10.5"
Opens to
10.5" x 17"

10.5 INCHES WIDE

17 INCHES TALL



295% BIGGER Than our
Jumbo Postcard!

As low as
37.9¢ Includes
Postage

MAYTAG®

\$443 each

MSRP \$699 washer
MSRP \$649 dryer



SAVE \$462 ON THE PAIR!

3.6 cu.ft. Top Load Washer with PowerWash® Cycle
MWWC416FW

7.0 cu.ft. Large Capacity Electric Dryer with Wrinkle Control Option
MEDC215EW

Whirlpool®

\$666 each

MSRP \$899



SAVE \$466 ON THE PAIR!

Shown on Optional Pedestals

4.5 cu.ft. Front Load Washer with Adaptive Wash Technology
WFW75HEFW

7.4 cu.ft. Electric Dryer with Advanced Moisture Sensing
WED75HEFW

Whirlpool®

\$777 each

MSRP \$999



SAVE \$444 ON THE PAIR!

Shown on Optional Pedestals

4.5 cu.ft. Front Load Washer with ColorLast™ Cycle
WFW85HEFW

7.4 cu.ft. Electric Dryer with Advanced Moisture Sensing
WED85HEFW

CHRISTIE'S
Appliance Co.

Holiday
SALES EVENT

December
7th - 20th



Scratch & Win™

Match your number in our store to see if you're our grand prize winner!



- **\$10,000 Shopping Spree**
- **KitchenAid® Stand Mixer**
- **\$25 - \$50 Additional Instant Savings** on purchases \$499 and up

Dealer Name
Street Address
City, State ZIP

**POSTMASTER: Please Deliver X/XX, X/XX, X/XX
OR CURRENT RESIDENT**

PRESORT STANDARD
U.S. POSTAGE
PAID
INVIGORATE
MEDIA

*Doug Nelson
115 Mississippi Ave
Crystall City, MO 63019*

Artwork Version: 01MM3905WP_HolidaySale

KitchenAid®

RECEIVE UP TO **\$1600**

BY MAIL WITH PURCHASE OF SELECT KITCHENAID® BRAND APPLIANCES* Valid November 1, 2017 - January 2, 2018

PLUS UP TO \$100

INSTALLATION REBATE BY MAIL WITH PURCHASE OF A SELECT KITCHENAID® BRAND DISHWASHER*
Valid November 30 - December 31, 2017

Whirlpool®

**STAINLESS STEEL
KITCHEN SUITE**

MSRP \$3316

\$2599



25 cu.ft. Side-by-Side Refrigerator with SpillGuard™ Glass Shelves
WRS325FDAM



2.1 cu.ft. Over-the-Range Microwave with Steam Cooking
WMH53521HZ



6.4 cu.ft. Electric Range with AquaLift® Self-Cleaning Technology
WFE540HDES



Stainless Steel Dishwasher with 1-Hour Wash Cycle
WDF520PADM

SAVE \$717 ON THE PACKAGE!

MAYTAG®

FINGERPRINT RESISTANT STAINLESS STEEL KITCHEN SUITE

**22 cu.ft. Bottom
Mount Refrigerator**
with BrightSeries™
LED Lighting
MBF2258FEZ

**2.0 cu.ft. Over-the-
Range Microwave** with
Interior Cooking Rack
MMV4206FZ

6.4 cu.ft. Electric Range
with True Convection
and Power Preheat
MER8800FZ

**Stainless Steel
Dishwasher** with
PowerBlast™ Cycle
MDB4949SDZ



MSRP \$3616

\$3099

**SAVE \$517
ON THE PACKAGE!**

**12 MONTHS
SPECIAL FINANCING!***

**SAVE AN
ADDITIONAL 10%
ON SELECT CLOSEOUT MODELS**

*We Sell It &
Service It*

BUYING POWER – We are a member of a \$15 Billion buying organization. The majority of our appliances are priced at or below home improvement store prices. Don't sacrifice quality service before or after the sale. **BUY FROM A LOCALLY OWNED BUSINESS!**

SAVE
ON ALL BUILT-IN
**WALL OVENS &
COOKTOPS...**
EVEN SPECIAL ORDERS!



AMANA®

Whirlpool®

KitchenAid®



\$329

MSRP
\$369

SAVE \$40

**Stainless Steel
Dishwasher**
with Triple Filter
Wash System
ADB1400AGS



\$499

MSRP
\$649

SAVE \$150

**Stainless Steel
Dishwasher**
with 1-Hour
Wash Cycle
WDF560SAFM



\$665

MSRP
\$849

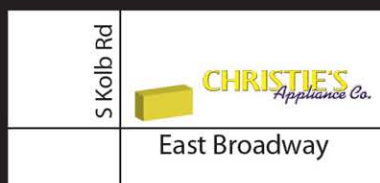
SAVE \$184

**Stainless Steel
Dishwasher**
with ProWash™
Cycle
KDFE104DSS

Selling & Servicing Major Appliances in Tucson Since 1956

CHRISTIE'S
Appliance Co.

7255 E. Broadway at S. Kolb • (520) 296-7218



nationwide
marketing group
**\$15 BILLION
BUYING
POWER**
We're proud of our association with the largest buying organization in the country, which brings you the combined purchasing power of thousands of retail stores nationwide. This huge buying power is passed along to our customers by means of lower prices every day on the finest name brand products in the world.

*See store for complete details on all offers, financing and rebates. **Employees of retailer, mail-house, associate sponsors and ad agency as well as their family members of the same household are not eligible. Restrictions apply. No purchase necessary. Odds of winning \$10,000 Shopping Spree 1:350,000; KitchenAid® Stand Mixer 3:XX,XXX; Additional Discounts on minimum purchase of \$499 and above: \$25 XX,XX,XXX; \$30 XXX,XXX; \$50 XXX,XXX. Mail piece must be presented to a representative of our store to participate in all offers of this mail piece. Participant must be 18 years of age or older, a legal U.S. Citizen, have a valid U.S. Driver's License and be a recipient of the mail piece via U.S. Mail. Winning numbers are predetermined. Winning numbers will not be disclosed over the telephone. Only valid during event dates and hours. VOID WHERE PROHIBITED BY LAW. ©/TM ©2017. All rights reserved. HUB Pre-Approval XXXXXX. 01MM3905WP_HolidaySale chletter ©2017 Invigorate Media, LLC. All Rights Reserved. 800-770-5219.

The Legal Limit **MAX!** Postcard

Anything bigger would be criminal.

14 INCHES **WIDE**
HUGE!



CHRISTIE'S Appliances Co.
Holiday SALES EVENT
December 7th - 20th

12 MONTHS SPECIAL FINANCING!

MAYTAG **Whisper** **Whisper**
\$443 each \$666 each \$777 each
SAVE \$462 ON THE PACKAGE SAVE \$465 ON THE PACKAGE SAVE \$444 ON THE PACKAGE

STAINLESS STEEL KITCHEN SUITE
\$2599
SAVE \$717 ON THE PACKAGE

KitchenAid
RECEIVE UP TO \$1600 PLUS UP TO \$100



MAYTAG **FINGERPRINT RESISTANT STAINLESS STEEL KITCHEN SUITE**
\$3099
SAVE \$517 ON THE PACKAGE

We Sell It & Service It
BUYING POWER - We are a member of a \$15 billion buying organization. The beauty of our packages are priced at or below some independent shop prices. Don't forget quality service before or after the sale. BUY FROM A LOCALLY OWNED BUSINESS!

AMANA **Whisper** **KitchenAid**
\$329 \$499 \$665
SAVE \$40 SAVE \$150 SAVE \$184

Scratch & Win
\$250
• \$10,000 Shopping Spree
• KitchenAid® Stand Mixer
• \$25 - \$50 Additional Instant Savings on purchases totaling \$25

SAVE AN ADDITIONAL 10% ON SELECT CLOSEOUT MODELS

SAVE ON ALL BUILT-IN WALL OVENS & COOKTOPS... EVEN SPECIAL ORDERS!

CHRISTIE'S Appliances Co.
7258 S. Broadway at S. Kolb • (520) 286-7218

Whisper **Whisper** **Whisper**
\$443 each \$666 each \$777 each
SAVE \$462 ON THE PACKAGE SAVE \$465 ON THE PACKAGE SAVE \$444 ON THE PACKAGE

KitchenAid
RECEIVE UP TO \$1600 PLUS UP TO \$100

The **LARGEST** piece of mail the US Postal Service will allow!

As low as
39.9¢
Includes Postage

255% BIGGER Than our Jumbo Postcard!

11 INCHES TALL

CHRISTIE'S
Appliance Co.

Holiday

SALES EVENT

December
7th - 20th

Whirlpool

STAINLESS STEEL KITCHEN SUITE

MSRP \$3316

\$2599

SAVE \$717 ON THE PACKAGE!

25 cu.ft. Side-by-Side Refrigerator with SpillGuard™ Glass Shelves
WRS325FDAM

2.1 cu.ft. Over-the-Range Microwave with Steam Cooking
WMH53521HZ

6.4 cu.ft. Electric Range with AquaLift® Self-Cleaning Technology
WFE540H0ES

Stainless Steel Dishwasher with 1-Hour Wash Cycle
WDF520PADM

12 MONTHS SPECIAL FINANCING!*

MAYTAG

\$443 each

MSRP \$699 washer
MSRP \$649 dryer

10 YEAR LIMITED WARRANTY

SAVE \$462 ON THE PAIR!

3.6 cu.ft. Top Load Washer with PowerWash® Cycle
MVWC416FW

7.0 cu.ft. Large Capacity Electric Dryer with Wrinkle Control Option
MEDC215EW

Whirlpool

\$666 each

MSRP \$999

SAVE \$466 ON THE PAIR!

Shown on Optional Pedestals

4.5 cu.ft. Front Load Washer with Adaptive Wash Technology
WFW75HEFW

7.4 cu.ft. Electric Dryer with Advanced Moisture Sensing
WED75HEFW

Whirlpool

\$777 each

MSRP \$999

SAVE \$444 ON THE PAIR!

Shown on Optional Pedestals

4.5 cu.ft. Front Load Washer with ColorLast™ Cycle
WFW85HEFW

7.4 cu.ft. Electric Dryer with Advanced Moisture Sensing
WED85HEFW

KitchenAid

RECEIVE UP TO **\$1600**

BY MAIL WITH PURCHASE OF SELECT KITCHENAID® BRAND APPLIANCES* Valid November 1, 2017 - January 2, 2018

PLUS UP TO \$100

INSTALLATION REBATE BY MAIL WITH PURCHASE OF A SELECT KITCHENAID® BRAND DISHWASHER* Valid November 30 - December 31, 2017

MAYTAG

FINGERPRINT RESISTANT STAINLESS STEEL KITCHEN SUITE

22 cu.ft. Bottom
Mount Refrigerator
with BrightSeries™
LED Lighting
MBF2258FEZ

2.0 cu.ft. Over-the-
Range Microwave with
Interior Cooking Rack
MMV4206FZ

6.4 cu.ft. Electric Range
with True Convection
and Power Preheat
MER8800FZ

Stainless Steel
Dishwasher with
PowerBlast™ Cycle
MDB4949SDZ



MSRP \$3616

\$3099

10 YEAR
LIMITED PARTS
WARRANTY

SAVE \$517
ON THE PACKAGE!

**We Sell It &
Service It**

BUYING POWER – We are a member of a \$15 Billion buying organization. The majority of our appliances are priced at or below home improvement store prices. Don't sacrifice quality service before or after the sale. **BUY FROM A LOCALLY OWNED BUSINESS!**

AMANA



\$329

MSRP \$369

SAVE \$40

Stainless Steel
Dishwasher
with Triple Filter
Wash System
ADB1400AGS

Whirlpool



\$499

MSRP \$549

SAVE \$150

Stainless Steel
Dishwasher
with 1-Hour
Wash Cycle
WDF5605AFM

KitchenAid



\$665

MSRP \$849

SAVE \$184

Stainless Steel
Dishwasher
with ProWash™
Cycle
KDFE104DSS

Selling & Servicing Major Appliances in Tucson Since 1956

CHRISTIE'S
Appliance Co.

7255 E. Broadway at S. Kolb • (520) 296-7218



nationwide
marketing group
\$15 BILLION
BUYING
POWER
We're proud of our association with the largest buying organization in the country, which brings you the combined purchasing power of thousands of retail stores nationwide. This huge buying power is passed along to our customers by means of lower prices every day on the finest name brand products in the world.

Dealer Name
Street Address
City, State Zip

**POSTMASTER: Please Deliver X/XX, X/XX, X/XX
OR CURRENT RESIDENT**

PRESORT STANDARD
U.S. POSTAGE
PAID
INVIGORATE
MEDIA

*Doug Nelson
115 Mississippi Ave
Crystal City, MO 63019*

Artwork Version: 01LM3904WP_HolidaySale



SAVE AN ADDITIONAL 10%
ON SELECT CLOSEOUT MODELS



*See store for complete details of all offers, financing and rebates. ®/™ © 2017. All rights reserved. HUB Pre-Approval XXXXXX, 01LM3904WP_HolidaySale chertell ©2017 Invigorate Media, LLC. All Rights Reserved. 800-770-5219.

The Jumbo Postcard

CHRISTIE'S
Appliance Co.

Holiday

SALES EVENT

December
7th - 20th



Whirlpool®



25 cu.ft. Side-by-Side
Refrigerator with
SpillGuard™ Glass Shelves
WRS325FDAM

STAINLESS STEEL KITCHEN SUITE



**SAVE \$717
ON THE PACKAGE!**



MSRP *\$3316

\$2599

2.1 cu.ft. Over-the-
Range Microwave
with Steam Cooking
WMH53521HZ

6.4 cu.ft. Electric Range
with AquaLift® Self-
Cleaning Technology
WFE540H0ES

Stainless Steel
Dishwasher with
1-Hour Wash Cycle
WDF520PADM

12 MONTHS SPECIAL FINANCING!*

MAYTAG®

\$443 each

MSRP \$699 washer
MSRP \$649 dryer



3.6 cu.ft. Top
Load Washer with
PowerWash® Cycle
MVWC416FW

7.0 cu.ft. Large Capacity
Electric Dryer with
Wrinkle Control Option
MEDC215EW

Whirlpool

\$666 each

MSRP \$999



4.5 cu.ft. Front Load
Washer with Adaptive
Wash Technology
WFW75HEFW

7.4 cu.ft. Electric
Dryer with Advanced
Moisture Sensing
WED75HEFW

KitchenAid®

\$1600

RECEIVE UP TO

BY MAIL WITH PURCHASE OF SELECT KITCHENAID® BRAND APPLIANCES*
Valid November 1, 2017 - January 2, 2018

PLUS UP TO \$100

INSTALLATION REBATE BY MAIL WITH PURCHASE OF A SELECT
KITCHENAID® BRAND DISHWASHER* Valid November 30 - December 31, 2017

Dealer Name
Street Address
City, State ZIP

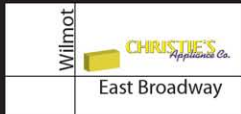
**POSTMASTER: Please Deliver X/XX, X/XX, X/XX
OR CURRENT RESIDENT**

PRESORT STANDARD
U.S. POSTAGE
PAID
INVIGORATE
MEDIA

Selling & Servicing Major Appliances in Tucson Since 1956

CHRISTIE'S
Appliance Co.

6355 E. Broadway at Wilmot • (520) 296-7218



Doug Nelson
115 Mississippi Ave
Crystat City, MO 63019

Artwork Version: 01JP3906WP_HolidaySale

*See store for complete details of all offers, financing and rebates. ®/™ © 2017. All rights reserved. HUB Pre-Approval XXXXX. 01JP3906WP_HolidaySale
cheitert ©2017 Invigorate Media, LLC. All Rights Reserved. 800-770-5219.

Alternate Jumbo Card

CHRISTIE'S
Appliance Co.

2 DAYS
ONLY

PRIVATE SALE EVENT

FRIDAY & SATURDAY
DECEMBER 15TH & 16TH

AMANA®

Whirlpool®

MAYTAG®

KitchenAid®

12 MONTHS SPECIAL FINANCING*



HUGE SAVINGS

ON ALL **KITCHEN &
LAUNDRY MODELS!**



Dear Friends & Family,

Take good care of this card! It entitles you to take part in our **Private Sale Event** at **Christie's Appliance** from **Friday & Saturday, December 15 & 16**.

For 2 Days ONLY you will have an opportunity to take advantage of our **BEST DEALS of the Year!** Receive our **Lowest Prices** on all brands including Maytag®, Whirlpool®, KitchenAid® & Amana®. Now is the time to save on every Laundry & Kitchen Appliance. For example...in addition to our Year's Lowest Prices, **Receive up to a \$1,600 Rebate** on select KitchenAid® appliances!*

SAVE BIG on select closeout and discontinued merchandise.

This **PRIVATE SALE** will NOT be advertised anywhere else. Discounted prices will only be available during these sale days.

As always, we are there to serve you after the sale.

Hope to see you then!

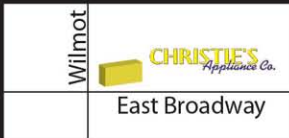
Christie's Appliance Staff



Selling & Servicing Major Appliances in Tucson Since 1956

CHRISTIE'S
Appliance Co.

6355 E. Broadway at Wilmot • (520) 296-7218



Wilmot

East Broadway

*See store for complete details of all offers, financing and rebates. ®/™ © 2017. All rights reserved. HUB Pre-Approval XXXXXX. JP3916WP_HolidayPrivateSale cheitert ©2017 Invigorate Media, LLC. All Rights Reserved. 800-770-5219.



KitchenAid®

RECEIVE UP TO

\$1600

BY MAIL WITH PURCHASE OF SELECT
KITCHENAID® BRAND APPLIANCES*

Valid November 1, 2017 - January 2, 2018

Dealer Name
Street Address
City, State ZIP

PRESORT STANDARD
U.S. POSTAGE
PAID
INVIGORATE
MEDIA

**POSTMASTER: Please Deliver X/XX, X/XX, X/XX
OR CURRENT RESIDENT**

*Doug Nelson
115 Mississippi Ave
Crystat City, MO 63019*

Artwork Version: JP3916WP_HolidayPrivateSale

MODEL LIST : MONSTER MAILER

*Some models may not appear on smaller mailers

December 7 – 20
Holiday Sales Event

Prices are set at MAP or Current Promo MAP. If you would like to advertise at 10% less than MAP (the lowest Co-Opable price), please check [HERE...](#) ☐ **10% Off**

Brand	Maytag	Model #	MVWC416FW	MSRP	\$699	SALE PRICE	\$443 (Less 10% = \$399)
Brand	Maytag	Model #	MEDC215EW	MSRP	\$649	SALE PRICE	\$443 (Less 10% = \$399)
Brand	Whirlpool	Model #	WFW75HEFW	MSRP	\$899	SALE PRICE	\$666 (Less 10% = \$599)
Brand	Whirlpool	Model #	WED75HEFW	MSRP	\$899	SALE PRICE	\$666 (Less 10% = \$599)
Brand	Whirlpool	Model #	WFW85HEFW	MSRP	\$999	SALE PRICE	\$777 (Less 10% = \$699)
Brand	Whirlpool	Model #	WED85HEFW	MSRP	\$999	SALE PRICE	\$777 (Less 10% = \$699)
Brand	Whirlpool Kitchen Package			MSRP	\$3316	SALE PRICE	\$2599 (Lowest Price = \$2299)
Brand		Model #	WRS325FDAM	MSRP		SALE PRICE	
Brand		Model #	WMH53521HZ	MSRP		SALE PRICE	
Brand		Model #	WFE540H0ES	MSRP		SALE PRICE	
Brand		Model #	WDF520PADM	MSRP		SALE PRICE	
Brand	Maytag Kitchen Package			MSRP	\$3616	SALE PRICE	\$3099 (Lowest Price = \$2799)
Brand		Model #	MBF2258FEZ	MSRP		SALE PRICE	
Brand		Model #	MMV4206FZ	MSRP		SALE PRICE	
Brand		Model #	MER8800FZ	MSRP		SALE PRICE	
Brand		Model #	MDB4949SDZ	MSRP		SALE PRICE	
Brand	Amana	Model #	ADB1400AGS	MSRP	\$369	SALE PRICE	\$329 (OPEN PRICE)
Brand	Whirlpool	Model #	WDF560SAFM	MSRP	\$649	SALE PRICE	\$499 (Less 10% = \$449)
Brand	KitchenAid	Model #	KDFE104DSS	MSRP	\$849	SALE PRICE	\$665 (Less 10% = \$599)



Monster Mailer • Legal Limit Max • Jumbo Postcard

Order Form

Email orders to: **ORDER@InvigorateMedia.com**

or Fax orders to: **636-794-3223**

Sales: **1-800-770-5219** Doug Nelson or Bill Menkhus

Business Name: _____ Contact Name: _____

Address: _____ City: _____ State: _____ Zip: _____

Phone: _____ Cell: _____ Email: _____

Buying Group: _____ **Whirlpool Dealers** - Want us to file your HUB co-op paperwork on your behalf?: ☐ YES!

Whirlpool Rep: _____ **HUB Log-in Username:** _____ **Password:** _____

Step 1

Sale Dates

Indicate your sale dates here:

Step 2

Please List Artwork Version Number

Artwork Version in white address panel,
ie Version: LL2041WP; 01MM954X)

Indicate number here: _____

Do you want "Scratch Off" Promo? ☐ Yes ☐ No **(Scratch Off Promo: Add 3 cents per mailer)**

Step 3

Quantity Single Family Homes: **Select One**

Monster Mailer ☐ 1. 5,000 - \$2,343 ☐ 2. 10,000 - \$3,939

Legal Limit MAX! ☐ 1. 5,000 - \$2,443 ☐ 2. 10,000 - \$4,139

Jumbo Postcard Pricing:

☐ 1. 1,000 - \$749 ☐ 2. 2,000 - \$1,349

☐ 3. 3,000 - \$1,749 ☐ 4. 4,000 - \$2,049

☐ 5. 5,000 - \$2,243 ☐ 6. 10,000 - \$3,739

Additional Mailers, ADD: MONSTER - 37.9¢ each

LEGAL LIMIT MAX - 39.9¢ each • JUMBO POSTCARD - 35.9¢ each (on quantities over 5,000)

Step 4

Financing & Special Offers: *All offers are solely the retailer's responsibility.* ie. Financing, Rebates, Free Delivery, etc.

Financing offer terms - # of Months ie. 6, 12, 18 _____; With Payments? YES or NO; Minimum Purchase: \$ _____;

List your special offers here: _____

Step 5

Signature (REQUIRED): _____ (Your order will not be processed without a signature)

Invigorate Media has no responsibility for, nor may payment be contingent upon, availability of featured merchandise. Invigorate Media shall not be responsible for nondelivery or damage to printed materials owing to acts of God, strikes, shipping failures, timeliness of post office or any other causes beyond its control. Direct mail costs are based on US postal rates as of May 2015 and are subject to change without notice.

Step 6

Select ONE: ☐ 1. Zip Codes - Complete Below **OR** ☐ 2. Let us run a radius around your store

Call us for free consultation on selecting your mailing list

1.	2.	3.	4.	5.
6.	7.	8.	9.	10.

Pricing Includes: \$50,000* Household Median Income

• Single Family Home Mailing List

Monster 10.5" x 17" • Legal Limit Max! 11" x 14" • Jumbo Postcard 6" x 11"

• Single Family Home Postage

Monster Mailer/Jumbo Postcard: Targeted Homeowner Income List OR Dealer's Customer List: Add 5¢
Legal Limit Max: Targeted Homeowner Income List OR Dealer's Customer List: Add 7¢

Add'l SCFs: Add \$100

Business Name: _____ City: _____ State: _____

Step
8

List your model changes below

Fax 2nd page with your Order Form

List your model changes below. Models NOT DELETED will remain on your proof. The space allowed for models/images is limited to the direct mail piece selected

1. **DELETE:** Brand _____ Model # _____ **REPLACE WITH:** Brand _____ Model # _____
CHANGE PRICE TO: \$ _____ and/or **CHANGE SAVE TO:** \$ _____
2. **DELETE:** Brand _____ Model # _____ **REPLACE WITH:** Brand _____ Model # _____
CHANGE PRICE TO: \$ _____ and/or **CHANGE SAVE TO:** \$ _____
3. **DELETE:** Brand _____ Model # _____ **REPLACE WITH:** Brand _____ Model # _____
CHANGE PRICE TO: \$ _____ and/or **CHANGE SAVE TO:** \$ _____
4. **DELETE:** Brand _____ Model # _____ **REPLACE WITH:** Brand _____ Model # _____
CHANGE PRICE TO: \$ _____ and/or **CHANGE SAVE TO:** \$ _____
5. **DELETE:** Brand _____ Model # _____ **REPLACE WITH:** Brand _____ Model # _____
CHANGE PRICE TO: \$ _____ and/or **CHANGE SAVE TO:** \$ _____
6. **DELETE:** Brand _____ Model # _____ **REPLACE WITH:** Brand _____ Model # _____
CHANGE PRICE TO: \$ _____ and/or **CHANGE SAVE TO:** \$ _____
7. **DELETE:** Brand _____ Model # _____ **REPLACE WITH:** Brand _____ Model # _____
CHANGE PRICE TO: \$ _____ and/or **CHANGE SAVE TO:** \$ _____
8. **DELETE:** Brand _____ Model # _____ **REPLACE WITH:** Brand _____ Model # _____
CHANGE PRICE TO: \$ _____ and/or **CHANGE SAVE TO:** \$ _____
9. **DELETE:** Brand _____ Model # _____ **REPLACE WITH:** Brand _____ Model # _____
CHANGE PRICE TO: \$ _____ and/or **CHANGE SAVE TO:** \$ _____
10. **DELETE:** Brand _____ Model # _____ **REPLACE WITH:** Brand _____ Model # _____
CHANGE PRICE TO: \$ _____ and/or **CHANGE SAVE TO:** \$ _____
11. **DELETE:** Brand _____ Model # _____ **REPLACE WITH:** Brand _____ Model # _____
CHANGE PRICE TO: \$ _____ and/or **CHANGE SAVE TO:** \$ _____
12. **DELETE:** Brand _____ Model # _____ **REPLACE WITH:** Brand _____ Model # _____
CHANGE PRICE TO: \$ _____ and/or **CHANGE SAVE TO:** \$ _____
13. **DELETE:** Brand _____ Model # _____ **REPLACE WITH:** Brand _____ Model # _____
CHANGE PRICE TO: \$ _____ and/or **CHANGE SAVE TO:** \$ _____

From: coop@whirlpoolhub.com [mailto:coop@whirlpoolhub.com]
Sent: Monday, November 6, 2017 12:34 PM
To: steven_menkhus@invigoratemedias.com
Subject: Whirlpool Corporation Advertising Compliance Review Approved

000INVIGPA

Your Reference Comments: 01LM3904WP - Holiday

The advertising you submitted for a Compliance Review has been approved. When submitting your claim for Co-Op reimbursement, please reference the Advertising Compliance Review Request Number below:

Compliance Review Request Number: 174467

For details, please visit The HUB at whirlpoolhub.com

Please be aware that any changes to the advertising content or dates will void this Advertising Compliance Review approval.

If you have questions about the policy and/or interpretation with regards to your advertisements, please contact us. While dealer alone shall determine advertising and selling prices, Co-Op funds are subject to compliance with the policy.

Thank you for your support of Whirlpool Corporation and its portfolio of brands.

Have Questions? Call your Concierge at [1-855-458-5446](tel:1-855-458-5446) (Option 3) or email us at coop@whirlpoolhub.com.