



**invigorate!**  
marketing & media

Contact Invigorate Media 800-770-5219

**100% CO-OP & FREE CO-OP FILING!**

## ***X13 Whirlpool Brands "YEAR END SALE!"***

Targeted Direct Mail is the most Effective Method for Driving Immediate Store Traffic & Sales.

Make ANY Changes to art - Prices/Models/Brands. We will re-approve for 100% co-op!

**Dates December 28 - January 10**

**Start Event - December 28**

**Order by December 7**

**Start Event - January 4**

**Order by December 13**

**Choose from Three Sizes**

1. **The Monster Mailer tri-fold** Arrives in mail 6" x 10.5" and opens to 10.5" x 17" **Only 37.9 Cents.**
2. **The Legal Limit MAX Postcard 11"x 14"** - The Largest Piece of Mail Allowed by Law! **Only 39.9 Cents.**
3. **The Jumbo Card 6" x 11"** Only 35.9 Cents. **NOTE: Jumbo Card - Great for smaller budgets - From \$749 includes everything. See Order form!**

**All orders Include** art with Edits, Single Family Postage, Printing, Our Mailing List with Home Owner Median Incomes to "Target", Addressing & Shipping to Dealer's Local Post Office for In-Home Delivery.

**Option** - Use your store customer list – ask for details.

**We will file your HUB co-op paper work for you if indicated on order form at end of this PDF.**

**Add the "Scratch Off" Promotion to either mailer/3 Cents extra.** – Includes Scratch Off Sticker with Prize Numbers, \$10,000 Group Insurance Policy, (3) Kitchen-Aid Stand Mixers (zero dealer liabilities), and your option to add your own default prizes such as a Free 10-Year Component warranty with purchase - or additional \$10 - \$50 Instant Savings, Mounted Prize Board & extra mailers for walk in traffic.

**Contact 800-770-5219**

Bill Menkhus    bill\_menkhus@invigoratemedia.com    Cell 636-524-1240  
Doug Nelson    doug\_nelson@invigoratemedia.com    Cell 636-578-8130

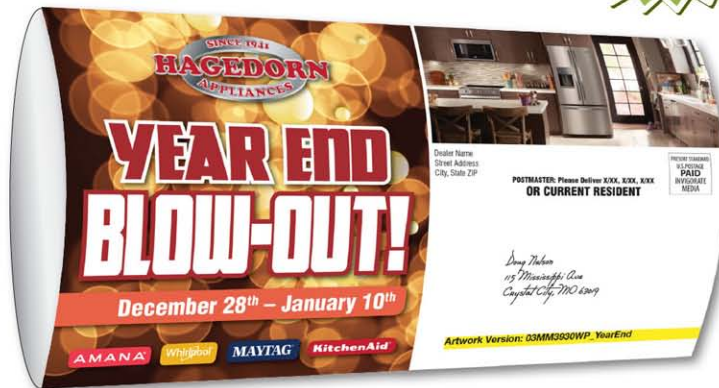
# The Monster Mailer Tri-Fold

Proven by  
Monstrous Results

Arrives in the  
mailbox as  
**6" x 10.5"**  
Opens to  
**10.5" x 17"**

10.5 INCHES WIDE

17 INCHES TALL



**295% BIGGER** Than our  
Jumbo Postcard!

As low as  
**37.9¢** Includes  
Postage



Whirlpool



**\$1111**

MSRP  
\$1299

**SAVE \$188**

**21.4 Side-by-Side Refrigerator** with Adjustable Gallon Door Bins  
WRS321SDHZ

MAYTAG



**\$1299**

MSRP  
\$1399

**SAVE \$100**

**22 Bottom-Freezer Refrigerator** with SpillProof Glass Shelves  
MBF2258FEB

MAYTAG



**\$1388**

MSRP  
\$1599

**SAVE \$211**

**25.5 Side-by-Side Refrigerator** with Fingerprint Resistant Stainless Steel  
MSS26C6MFZ

Whirlpool



MSRP  
\$279

**\$189**

**1.7 cu.ft. Over-the-Range Microwave** with Preset Options  
WMH31017HS

**SAVE \$374 ON THE PAIR!**



MSRP  
\$949

**\$665**

**6.4 cu.ft. Electric Range** with Fan Convection Cooking  
WFE540H0ES  
WFG540H0ES - Gas add \$56

SINCE 1941  
**HAGEDORN**  
APPLIANCES

**YEAR END BLOW-OUT!**

**December 28<sup>th</sup> – January 10<sup>th</sup>**

AMANA

Whirlpool

MAYTAG

KitchenAid

**SCRATCH & WIN**



- **\$10,000 Shopping Spree**
- **KitchenAid® Stand Mixer**
- **\$25 – \$50 Additional Instant Savings** on purchases \$499 and up

Match your number in our store to see if you're our grand prize winner!

Dealer Name  
Street Address  
City, State ZIP

**POSTMASTER: Please Deliver X/XX, X/XX, X/XX OR CURRENT RESIDENT**

PRESORT STANDARD  
U.S. POSTAGE  
**PAID**  
INVIGORATE  
MEDIA

*Doug Nelson  
115 Mississippi Ave  
Crystat City, MO 63019*

Artwork Version: 03MM3930WP\_YearEnd

**SAVE ON ALL KITCHEN & LAUNDRY APPLIANCES!**

Whirlpool



**24.6 cu.ft. Side-by-Side Refrigerator** with Humidity-Controlled Crispers  
WRS325SDHZ



**1.7 cu.ft. Over-the-Range Microwave** with Preset Options  
WMH31017HS

**\$2110**

MSRP  
\$2976

**SAVE \$866 ON THE PACKAGE!**



**5.3 cu.ft. Electric Range** with FlexHeat Radiant Element  
WFE515S0ES  
WFG515S0ES - Gas add \$111

**STAINLESS STEEL KITCHEN SUITE**

**Stainless Steel Dishwasher** with 1-Hour Wash Cycle  
WDF520PADM





# HUGE SAVINGS

on Odds 'n Ends, Open Box  
and Select Closeouts!



RECEIVE  
UP TO **\$1600**

BY MAIL WITH PURCHASE OF SELECT  
KITCHENAID® BRAND APPLIANCES\*

Valid November 1, 2017 - January 2, 2018

## 12 MONTHS SPECIAL FINANCING!\*

**MAYTAG®**



**SAVE \$694** ON THE  
PAIR  
INCLUDING PEDESTALS!

MSRP \$1099  
**\$832**  
each

4.5 cu.ft. Front Load  
Washer with Fresh  
Hold® Option  
MHW5500FW

7.4 cu.ft. Large Capacity  
Electric Dryer with  
Sanitize Cycle  
MED5500FW

PEDESTAL SPECIAL  
**\$199 ea.**  
XHPC155XW - MSRP \$279

## WE SELL IT & SERVICE IT

**BUYING POWER** – We are a member  
of an \$11 Billion buying organization.  
The majority of our appliances are  
priced at or below home improvement  
store prices. Don't sacrifice quality  
service before or after the sale.

**BUY FROM A LOCALLY  
OWNED BUSINESS!**

**Whirlpool®**

**\$532**

MSRP \$749

each



**SAVE \$434** ON THE  
PAIR!

4.3 cu.ft. Top  
Load Washer  
with Stainless  
Steel Wash  
Basket  
WTW5000DW

7.0 cu.ft.  
Electric Dryer  
with Wrinkle  
Shield™ Plus  
WED5000DW

**Whirlpool®**

**\$666**

MSRP \$899

each



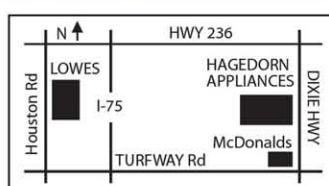
**SAVE \$466** ON THE  
PAIR!

4.5 cu.ft. Front  
Load Washer  
with Adaptive  
Wash Technology  
WFW75HEFW

7.4 cu.ft.  
Electric Dryer  
with Advanced  
Moisture Sensing  
WED75HEFW

SINCE 1941  
**HAGEDORN**  
APPLIANCES

4432 Dixie Highway • Erlanger, KY 41018 • 859-342-6060



[www.hagedornappliance.com](http://www.hagedornappliance.com)

**BRAND  
SOURCE®**

\*See store for complete details on all offers, financing and rebates. \*\*Employees of retailer, mail-house, associate sponsors and ad agency as well as their family members of the same household are not eligible. Restrictions apply. No purchase necessary. Odds of winning \$10,000 Shopping Spree 1:350,000; KitchenAid® Stand Mixer 3:XXXX; Additional Discounts on minimum purchase of \$499 and above: \$25 XXXXXXX, \$30 XXXXXXX, \$50 XXXXXXX. Mail piece must be presented to a representative of our store to participate in all offers of this mail piece. Participant must be 18 years of age or older, a legal U.S. Citizen, have a valid U.S. Driver's License and be a recipient of the mail piece via U.S. Mail. Winning numbers are predetermined. Winning numbers will not be disclosed over the telephone. Only valid during event dates and hours. VOID WHERE PROHIBITED BY LAW. ©/™ ©2017. All rights reserved. HUB Pre-Approval XXXXXX. 03MM3930WP\_YearEnd cheilert ©2017 Invigorate Media, LLC. All Rights Reserved. 800-770-5219.



# The Legal Limit **MAX!** Postcard

Anything bigger would be criminal.

14 INCHES **WIDE**  
**HUGE!**



11 INCHES TALL

The **LARGEST** piece of mail the US Postal Service will allow!

As low as  
**39.9¢**  
Includes Postage

**255% BIGGER** Than our Jumbo Postcard!

SINCE 1941  
**HAGEDORN**  
APPLIANCES

# YEAR END BLOW-OUT!

December 28<sup>th</sup> – January 10<sup>th</sup>

AMANA

Whirlpool

MAYTAG

KitchenAid

## HUGE SAVINGS

on Odds 'n Ends, Open Box  
and Select Closeouts!



24.6 cu.ft. Side-by-Side  
Refrigerator with  
Humidity-Controlled Crispers  
WRS325SDHZ

Whirlpool



1.7 cu.ft. Over-the-  
Range Microwave  
with Preset Options  
WMH31017HS



5.3 cu.ft. Electric  
Range with FlexHeat  
Radiant Element  
WFE515S0ES  
WFG515S0ES - Gas add \$111

## STAINLESS STEEL KITCHEN SUITE

MSRP \$2976  
**\$2110**

**SAVE \$866  
ON THE PACKAGE!**

Stainless Steel  
Dishwasher with  
1-Hour Wash Cycle  
WDF520PADM



## SAVE ON ALL KITCHEN & LAUNDRY APPLIANCES!

### 12 MONTHS SPECIAL FINANCING!\*

Whirlpool



21.4 Side-by-Side  
Refrigerator with  
Adjustable Gallon  
Door Bins  
WRS321SDHZ

MAYTAG



22 Bottom-Freezer  
Refrigerator with  
SpillProof Glass  
Shelves  
MBF2258FEB

MAYTAG



25.5 Side-by-Side  
Refrigerator with  
Fingerprint Resistant  
Stainless Steel  
MSS26C6MIFZ

Whirlpool



1.7 cu.ft. Over-the-Range  
Microwave with Preset Options  
WMH31017HS



6.4 cu.ft. Electric Range with  
Fan Convection Cooking  
WFE540H0ES  
WFG540H0ES - Gas add \$56

**SAVE \$374  
ON THE PAIR!**



**MAYTAG**



MSRP \$1099  
**\$832**  
each

4.5 cu.ft. Front Load Washer with Fresh Hold® Option  
MHW5500FW

7.4 cu.ft. Large Capacity Electric Dryer with Sanitize Cycle  
MED5500FW

PEDESTAL SPECIAL  
**\$199 ea.**  
XHPC155XW - MSRP \$279

# WE SELL IT & SERVICE IT

**BUYING POWER** – We are a member of an \$11 Billion buying organization. The majority of our appliances are priced at or below home improvement store prices. Don't sacrifice quality service before or after the sale.

**BUY FROM A LOCALLY OWNED BUSINESS!**

**Whirlpool**

**\$532** each  
MSRP \$749



4.3 cu.ft. Top Load Washer with Stainless Steel Wash Basket  
WTW5000DW

7.0 cu.ft. Electric Dryer with Wrinkle Shield™ Plus  
WED5000DW

**Whirlpool**

**\$666** each  
MSRP \$899

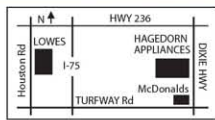


4.5 cu.ft. Front Load Washer with Adaptive Wash Technology  
WWF75HEFW

7.4 cu.ft. Electric Dryer with Advanced Moisture Sensing  
WED75HEFW

SINCE 1941  
**HAGEDORN**  
APPLIANCES

4432 Dixie Highway • Erlanger, KY 41018 • 859-342-6060



[www.hagedornappliance.com](http://www.hagedornappliance.com)

**BRAND**  
**SOURCE®**

Dealer Name  
Street Address  
City, State Zip

POSTMASTER: Please Deliver X/XX, X/XX, X/XX  
**OR CURRENT RESIDENT**

PRESORT STANDARD  
U.S. POSTAGE  
**PAID**  
INVIGORATE  
MEDIA

*Doug Nelson*  
115 Mississippi Ave  
Crystal City, MO 63019

Artwork Version: 03LM3929WP\_YearEnd

# YEAR END BLOW-OUT!



RECEIVE UP TO **\$1600**

BY MAIL WITH PURCHASE OF SELECT KITCHENAID® BRAND APPLIANCES\* Valid November 1, 2017 - January 2, 2018

\*See store for complete details of all offers, financing and rebates. ©/TM © 2017. All rights reserved, HUB Pre-Approval XXXXXX. 03LM3929WP\_YearEnd cheitert ©2017 Invigorate Media, LLC. All Rights Reserved. 800-770-5219.

# The Jumbo Postcard





# YEAR END BLOW-OUT!

December 28<sup>th</sup>  
thru January 10<sup>th</sup>

AMANA®

Whirlpool®

MAYTAG®

KitchenAid®



Whirlpool®



24.6 cu.ft. Side-by-Side  
Refrigerator with  
Humidity-Controlled  
Crispers  
WRS325SDHZ

## STAINLESS STEEL KITCHEN SUITE



1.7 cu.ft. Over-the-  
Range Microwave  
with Preset Options  
WMH31017HS



5.3 cu.ft. Electric  
Range with FlexHeat  
Radiant Element  
WFE515S0ES  
WFG515S0ES - Gas add \$111

Stainless Steel  
Dishwasher with  
1-Hour Wash Cycle  
WDF520PADM

MSRP \$2976

# \$2110

**SAVE \$866  
ON THE PACKAGE!**

## 12 MONTHS SPECIAL FINANCING!\*

# HUGE SAVINGS on Odds 'n Ends, Open Box and Select Closeouts!

Whirlpool

**\$532** each  
MSRP \$749



**SAVE \$434** ON THE PAIR!

4.3 cu.ft. Top Load Washer with Stainless Steel Wash Basket  
WTW5000DW

7.0 cu.ft. Electric Dryer with Wrinkle Shield™ Plus  
WED5000DW

MAYTAG

**\$832** each  
MSRP \$1099



**SAVE \$694** ON THE PAIR  
INCLUDING PEDESTALS!

4.5 cu.ft. Front Load Washer with Fresh Hold® Option  
MHWS500FW

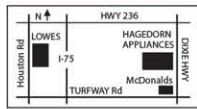
7.4 cu.ft. Large Capacity Electric Dryer with Sanitize Cycle  
MED5500FW

PEDESTAL SPECIAL  
**\$199** ea.  
X14P1C155XW  
MSRP \$279

10 YEAR LIMITED PARTS WARRANTY

SINCE 1941  
**HAGEDORN**  
APPLIANCES

4432 Dixie Highway • Erlanger, KY 41018 • 859-342-6060



[www.hagedornappliance.com](http://www.hagedornappliance.com)

**BRAND**  
**SOURCE®**

**KitchenAid®**

RECEIVE UP TO

**\$1600**

BY MAIL WITH PURCHASE OF SELECT KITCHENAID® BRAND APPLIANCES\*

Valid November 1, 2017 - January 2, 2018



Dealer Name  
Street Address  
City, State ZIP

**POSTMASTER: Please Deliver X/XX, X/XX, X/XX OR CURRENT RESIDENT**

PRESORT STANDARD  
U.S. POSTAGE  
**PAID**  
INVIGORATE  
MEDIA

*Doug Nelson*  
115 Mississippi Ave  
Crystall City, MO 63019

**Artwork Version: 03JP3931WP\_YearEnd**

\*See store for complete details of all offers, financing and rebates. ©/TM © 2017. All rights reserved. HUB Pre-Approval XXXXX. 03JP3931WP\_YearEnd cheilert ©2017 Invigorate Media, LLC. All Rights Reserved. 800-770-5219.



# Alternate Jumbo Card

**CHRISTIE'S**  
*Appliance Co.*

**2** DAYS  
ONLY

*Year End*  
**PRIVATE  
SALE EVENT**

FRIDAY & SATURDAY  
**DECEMBER 29<sup>TH</sup> & 30<sup>TH</sup>**

**AMANA**

**Whirlpool**

**MAYTAG**

**KitchenAid**

**12 MONTHS SPECIAL FINANCING\***



**HUGE SAVINGS**

ON ALL **KITCHEN &  
LAUNDRY MODELS!**





Dear Friends & Family,

Take good care of this card! It entitles you to take part in our **Private Sale Event** at **Christie's Appliance** from **Friday & Saturday, December 29 & 30**.

**For 2 Days ONLY** you will have an opportunity to take advantage of our **BEST DEALS of the Year!** Receive our **Lowest Prices** on all brands including Maytag®, Whirlpool®, KitchenAid® & Amana®. Now is the time to save on every Laundry & Kitchen Appliance. For example...in addition to our Year's Lowest Prices, **Receive up to a \$1,600 Rebate** on select KitchenAid® appliances!\*

**SAVE BIG** on select closeout and discontinued merchandise.

This **PRIVATE SALE** will NOT be advertised anywhere else. Discounted prices will only be available during these sale days.

As always, we are there to serve you after the sale.

Hope to see you then!

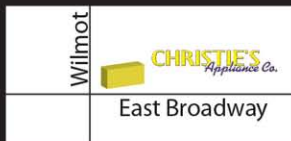
*Christie's Appliance Staff*



Selling & Servicing Major Appliances in Tucson Since 1956

**CHRISTIE'S**  
*Appliance Co.*

6355 E. Broadway at Wilmot • (520) 296-7218



\*See store for complete details of all offers, financing and rebates. ©/TM © 2017. All rights reserved. HUB Pre-Approval XXXXXX. JP3938WP\_YearEndPrivateSale cheitert ©2017 Invigorate Media, LLC. All Rights Reserved. 800-770-5219.



**KitchenAid®**

RECEIVE UP TO

**\$1600**

BY MAIL WITH PURCHASE OF SELECT  
KITCHENAID® BRAND APPLIANCES\*

Valid November 1, 2017 - January 2, 2018

Dealer Name  
Street Address  
City, State ZIP

**POSTMASTER: Please Deliver X/XX, X/XX, X/XX  
OR CURRENT RESIDENT**

PRESORT STANDARD  
U.S. POSTAGE  
**PAID**  
INVIGORATE  
MEDIA

*Doug Nelson  
115 Mississippi Ave  
Crystat City, MO 63019*

**Artwork Version: JP3938WP\_YearEndPrivateSale**

# MODEL LIST : MONSTER MAILER

\*Some models may not appear on smaller mailers

Dec 28 – Jan 10  
Year End Blow-Out

**Prices are set at MAP or Current Promo MAP. If you would like to advertise at 10% less than MAP (the lowest Co-Opable price), please check [HERE...](#) ☐ **10% Off****

Brand	Whirlpool	Model #	WRS321SDHZ	MSRP	\$1299	SALE PRICE	\$1111 (Less 10% = \$999)
Brand	Maytag	Model #	MBF2258FEB	MSRP	\$1399	SALE PRICE	\$1299 (Less 10% = \$1169)
Brand	Maytag	Model #	MSS26C6MFZ	MSRP	\$1599	SALE PRICE	\$1388 (Less 10% = \$1249)
Brand	Whirlpool	Model #	WMH31017HS	MSRP	\$279	SALE PRICE	\$189 (Less 10% = \$169)
Brand	Whirlpool	Model #	WFE540H0ES	MSRP	\$949	SALE PRICE	\$665 (Less 10% = \$599)
Brand	Whirlpool Kitchen Package			MSRP	\$2976	SALE PRICE	\$2110 (Lowest Price = \$1899)
Brand		Model #	WRS325SDHZ	MSRP		SALE PRICE	
Brand		Model #	WMH31017HS	MSRP		SALE PRICE	
Brand		Model #	WFE515S0ES	MSRP		SALE PRICE	
Brand		Model #	WDF520PADM	MSRP		SALE PRICE	
Brand	Maytag	Model #	MHW5500FW	MSRP	\$1099	SALE PRICE	\$832 (Less 10% = \$749)
Brand	Maytag	Model #	MED5500FW	MSRP	\$1099	SALE PRICE	\$832 (Less 10% = \$749)
Brand	Whirlpool	Model #	WTW5000DW	MSRP	\$749	SALE PRICE	\$532 (Less 10% = \$499)
Brand	Whirlpool	Model #	WED5000DW	MSRP	\$749	SALE PRICE	\$532 (Less 10% = \$499)
Brand	Whirlpool	Model #	WFW75HEFW	MSRP	\$899	SALE PRICE	\$666 (Less 10% = \$599)
Brand	Whirlpool	Model #	WED75HEFW	MSRP	\$899	SALE PRICE	\$666 (Less 10% = \$599)





**Monster Mailer • Legal Limit Max • Jumbo Postcard**

# Order Form

Email orders to: **ORDER@InvigorateMedia.com**

or Fax orders to: **636-794-3223**

Sales: **1-800-770-5219** Doug Nelson or Bill Menkhus

Business Name: \_\_\_\_\_ Contact Name: \_\_\_\_\_

Address: \_\_\_\_\_ City: \_\_\_\_\_ State: \_\_\_\_\_ Zip: \_\_\_\_\_

Phone: \_\_\_\_\_ Cell: \_\_\_\_\_ Email: \_\_\_\_\_

Buying Group: \_\_\_\_\_ **Whirlpool Dealers** - Want us to file your HUB co-op paperwork on your behalf?: ☐ YES!

Whirlpool Rep: \_\_\_\_\_ **HUB Log-in Username:** \_\_\_\_\_ **Password:** \_\_\_\_\_

**Step 1**

## Sale Dates

Indicate your sale dates here:

\_\_\_\_\_

**Step 2**

## Please List Artwork Version Number

Artwork Version in white address panel,  
ie Version: LL2041WP; 01MM954X)

Indicate number here: \_\_\_\_\_

**Do you want "Scratch Off" Promo?** ☐ Yes ☐ No **(Scratch Off Promo: Add 3 cents per mailer)**

**Step 3**

## Quantity Single Family Homes: **Select One**

Monster Mailer ☐ 1. 5,000 - \$2,343 ☐ 2. 10,000 - \$3,939

Legal Limit MAX! ☐ 1. 5,000 - \$2,443 ☐ 2. 10,000 - \$4,139

## Jumbo Postcard Pricing:

☐ 1. 1,000 - \$749 ☐ 2. 2,000 - \$1,349

☐ 3. 3,000 - \$1,749 ☐ 4. 4,000 - \$2,049

☐ 5. 5,000 - \$2,243 ☐ 6. 10,000 - \$3,739

**Additional Mailers, ADD:** MONSTER - 37.9¢ each

LEGAL LIMIT MAX - 39.9¢ each • JUMBO POSTCARD - 35.9¢ each (on quantities over 5,000)

**Step 4**

**Financing & Special Offers: *All offers are solely the retailer's responsibility.*** ie. Financing, Rebates, Free Delivery, etc.

Financing offer terms - # of Months ie. 6, 12, 18 \_\_\_\_\_; With Payments? YES or NO; Minimum Purchase: \$ \_\_\_\_\_;

List your special offers here: \_\_\_\_\_

**Step 5**

**Signature (REQUIRED):** \_\_\_\_\_ (Your order will not be processed without a signature)

Invigorate Media has no responsibility for, nor may payment be contingent upon, availability of featured merchandise. Invigorate Media shall not be responsible for nondelivery or damage to printed materials owing to acts of God, strikes, shipping failures, timeliness of post office or any other causes beyond its control. Direct mail costs are based on US postal rates as of May 2015 and are subject to change without notice.

**Step 6**

Select ONE: ☐ 1. Zip Codes - Complete Below **OR** ☐ 2. Let us run a radius around your store

**Call us for free consultation on selecting your mailing list**

1.	2.	3.	4.	5.
6.	7.	8.	9.	10.

## Pricing Includes: \$50,000\* Household Median Income

• Single Family Home Mailing List

Monster 10.5" x 17" • Legal Limit Max! 11" x 14" • Jumbo Postcard 6" x 11"

• Single Family Home Postage

Monster Mailer/Jumbo Postcard: Targeted Homeowner Income List OR Dealer's Customer List: Add 5¢

Legal Limit Max: Targeted Homeowner Income List OR Dealer's Customer List: Add 7¢

Add'l SCFs: Add \$100

Business Name: \_\_\_\_\_ City: \_\_\_\_\_ State: \_\_\_\_\_

Step  
8

List your model changes below

***Fax 2nd page with your Order Form***

List your model changes below. Models NOT DELETED will remain on your proof. The space allowed for models/images is limited to the direct mail piece selected

1. **DELETE:** Brand \_\_\_\_\_ Model # \_\_\_\_\_ **REPLACE WITH:** Brand \_\_\_\_\_ Model # \_\_\_\_\_  
**CHANGE PRICE TO:** \$ \_\_\_\_\_ and/or **CHANGE SAVE TO:** \$ \_\_\_\_\_
2. **DELETE:** Brand \_\_\_\_\_ Model # \_\_\_\_\_ **REPLACE WITH:** Brand \_\_\_\_\_ Model # \_\_\_\_\_  
**CHANGE PRICE TO:** \$ \_\_\_\_\_ and/or **CHANGE SAVE TO:** \$ \_\_\_\_\_
3. **DELETE:** Brand \_\_\_\_\_ Model # \_\_\_\_\_ **REPLACE WITH:** Brand \_\_\_\_\_ Model # \_\_\_\_\_  
**CHANGE PRICE TO:** \$ \_\_\_\_\_ and/or **CHANGE SAVE TO:** \$ \_\_\_\_\_
4. **DELETE:** Brand \_\_\_\_\_ Model # \_\_\_\_\_ **REPLACE WITH:** Brand \_\_\_\_\_ Model # \_\_\_\_\_  
**CHANGE PRICE TO:** \$ \_\_\_\_\_ and/or **CHANGE SAVE TO:** \$ \_\_\_\_\_
5. **DELETE:** Brand \_\_\_\_\_ Model # \_\_\_\_\_ **REPLACE WITH:** Brand \_\_\_\_\_ Model # \_\_\_\_\_  
**CHANGE PRICE TO:** \$ \_\_\_\_\_ and/or **CHANGE SAVE TO:** \$ \_\_\_\_\_
6. **DELETE:** Brand \_\_\_\_\_ Model # \_\_\_\_\_ **REPLACE WITH:** Brand \_\_\_\_\_ Model # \_\_\_\_\_  
**CHANGE PRICE TO:** \$ \_\_\_\_\_ and/or **CHANGE SAVE TO:** \$ \_\_\_\_\_
7. **DELETE:** Brand \_\_\_\_\_ Model # \_\_\_\_\_ **REPLACE WITH:** Brand \_\_\_\_\_ Model # \_\_\_\_\_  
**CHANGE PRICE TO:** \$ \_\_\_\_\_ and/or **CHANGE SAVE TO:** \$ \_\_\_\_\_
8. **DELETE:** Brand \_\_\_\_\_ Model # \_\_\_\_\_ **REPLACE WITH:** Brand \_\_\_\_\_ Model # \_\_\_\_\_  
**CHANGE PRICE TO:** \$ \_\_\_\_\_ and/or **CHANGE SAVE TO:** \$ \_\_\_\_\_
9. **DELETE:** Brand \_\_\_\_\_ Model # \_\_\_\_\_ **REPLACE WITH:** Brand \_\_\_\_\_ Model # \_\_\_\_\_  
**CHANGE PRICE TO:** \$ \_\_\_\_\_ and/or **CHANGE SAVE TO:** \$ \_\_\_\_\_
10. **DELETE:** Brand \_\_\_\_\_ Model # \_\_\_\_\_ **REPLACE WITH:** Brand \_\_\_\_\_ Model # \_\_\_\_\_  
**CHANGE PRICE TO:** \$ \_\_\_\_\_ and/or **CHANGE SAVE TO:** \$ \_\_\_\_\_
11. **DELETE:** Brand \_\_\_\_\_ Model # \_\_\_\_\_ **REPLACE WITH:** Brand \_\_\_\_\_ Model # \_\_\_\_\_  
**CHANGE PRICE TO:** \$ \_\_\_\_\_ and/or **CHANGE SAVE TO:** \$ \_\_\_\_\_
12. **DELETE:** Brand \_\_\_\_\_ Model # \_\_\_\_\_ **REPLACE WITH:** Brand \_\_\_\_\_ Model # \_\_\_\_\_  
**CHANGE PRICE TO:** \$ \_\_\_\_\_ and/or **CHANGE SAVE TO:** \$ \_\_\_\_\_
13. **DELETE:** Brand \_\_\_\_\_ Model # \_\_\_\_\_ **REPLACE WITH:** Brand \_\_\_\_\_ Model # \_\_\_\_\_  
**CHANGE PRICE TO:** \$ \_\_\_\_\_ and/or **CHANGE SAVE TO:** \$ \_\_\_\_\_