



Contact Invigorate Media 800-770-5219

**ACB Pre-Approved for CO-OP!**

## **GE Brands "January Clearance Event!"**

**Targeted Direct Mail is the most Effective Method for Driving Immediate Store Traffic & Sales.**

**Make ANY Changes to Prices/Models - We will re-approve for ACB GE CO-OP!**

**Run event any days from January 11 - 24**

**Start January 15 - Order by December 27**

**Start January 20 - Order by January 4**

**Choose between two sizes**

- 1. The Monster Mailer tri-fold** Arrives in mail 6" x 10.5" and opens to 10.5" x 17" **Only 37.9 Cents.**
- 2. The Legal Limit MAX Postcard** - 11" x 14" The Largest Piece of Mail Allowed by Law! **Only 39.9 Cents.**

**All orders Include** art with Edits, Single Family Home Postage, Printing, Our Targeted Mailing List with Home Owner Median Incomes to "Target", Addressing & Shipping to Dealer's local post office for In-Home Delivery. All changes will be resubmitted for pre-approval prior to printing to assure reimbursement. Option – use your customer list – call for details.

**Add the "Scratch Off" Promotion to any mailer/3 Cents extra** – Includes Scratch Off Sticker with Prize Numbers, \$10,000 Group Insurance Policy, (3) \$250 Visa Gift cards (zero dealer liabilities), and your option to add your own default prizes such as a Free \$79 Value 10-Year Component warranty with purchase - or \$25 - \$50 additional savings, Mounted Prize Board & extra mailers for walk in traffic.

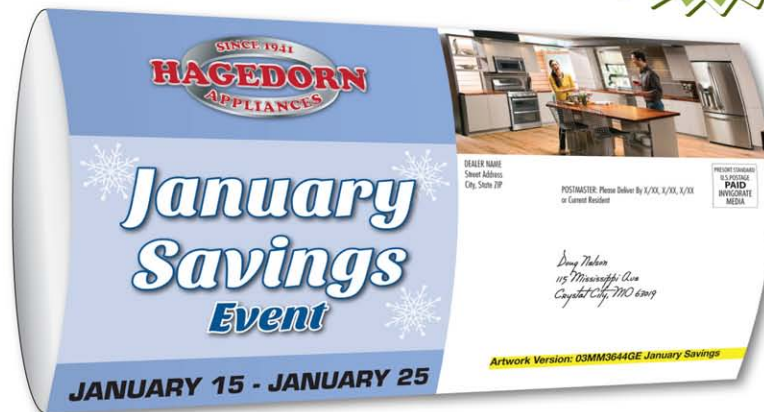
**Office 800-770-5219**

**Bill Menkhus**      **bill\_menkhus@invigoratemedias.com**    **Cell 636-524-1240**  
**Doug Nelson**      **doug\_nelson@invigoratemedias.com**    **Cell 636-578-8130**

# The Monster Mailer Tri-Fold

Proven by  
Monstrous Results

Arrives in the  
mailbox as  
**6" x 10.5"**  
Opens to  
**10.5" x 17"**



10.5 INCHES WIDE



17 INCHES TALL

**295% BIGGER** Than our  
Jumbo Postcard!

As low as  
**37.9¢** Includes  
Postage



**SAVE** ON ALL  
**BUILT-IN APPLIANCES!**  
EVEN ON SPECIAL ORDERS!

**12 MONTHS  
SPECIAL FINANCING!\***



**Scratch & Win\*\***

Match your number in our store to see if you're a winner!



- \$10,000 Shopping Spree
- \$250 Visa® Gift Card
- \$25-\$50 Additional Instant Discounts  
on purchases \$499 & up



DEALER NAME  
Street Address  
City, State ZIP

POSTMASTER: Please Deliver By X/XX, X/XX, X/XX  
or Current Resident

PRESORT STANDARD  
U.S. POSTAGE  
**PAID**  
INVIGORATE  
MEDIA

*Doug Nelson  
115 Mississippi Ave  
Crystall City, MO 63019*

Artwork Version: 03MM3644GE January Savings

**January  
Savings  
Event**

**JANUARY 15 - JANUARY 25**



**PROFILE™ PACKAGE REBATE UP TO \$1200\***

VALID 1/11 - 1/25



**PROFILE™  
KITCHEN  
SUITE**



**KEURIG® K-CUP BREWING  
SYSTEM**

The unexpected convenience of hot  
single serve brewing at your fridge



**DEEP CLEAN DISHWASHER  
JETS**

Powerful jets blast away stuck-on food  
for silverware that's always spotless

**27.8 CU. FT. FRENCH DOOR  
REFRIGERATOR**

- TwinChill™ Evaporators
  - Full-width, Electronic  
Temperature-Controlled Drawer  
with Colored LED Lights
- PFE28PSKSS

**30" FREESTANDING  
ELECTRIC CONVECTION  
RANGE**

- Edge-To-Edge Cooktop
  - Electronic Touch Controls
- PB911SJSS

**2.1 CU. FT. OVER-  
THE-RANGE SENSOR  
MICROWAVE OVEN**

- Sensor Cooking Controls
  - Chef Connect
- PVM9005SJSS

**STAINLESS STEEL  
INTERIOR DISHWASHER**

- Hidden Controls
  - Reverse Quad Blade  
Wash Arm
- PDT845SSJSS





**\$449**  **\$449**  
GE APPLIANCES



**SAVE \$200  
ON THE PAIR!**



REG \$549 EACH

**GE® 3.8 CU.FT. WASHER**

- Stainless Steel Tub
- Heavy Duty Agitator

GTW330ASKWW

**GE® 7.2 CU.FT. ELECTRIC DRYER**

- Auto Dry
- Aluminized Alloy Drum

GTD33EASKWW

**\$599**  **\$549**  
GE APPLIANCES



**SAVE \$350  
ON THE PAIR!**



REG \$749 EACH

**GE® 4.6 CU.FT. TOP LOAD WASHER**

- Stainless Steel Tub
- Deep Fill

GTW680BSJWS

**GE® 7.4 CU.FT. ELECTRIC DRYER**

- Aluminized Alloy Drum
- HE Sensor Dry

GTD65EBSJWS

**SAVE \$650 on this SLATE package!**

**\$2476**  
**PACKAGE PRICE**

REG \$3126

**25.4 CU. FT. SIDE-BY-SIDE REFRIGERATOR**

- Advanced Water Filtration
- Adjustable Slide-out Glass Shelves

GSS25GMHES

**1.7 CU. FT. OVER-THE-RANGE SENSOR MICROWAVE**

- Auto and Time Defrost
- Express Cook

JVM6175EFES

**30" FREESTANDING ELECTRIC CONVECTION RANGE**

- 12"/9" Dual Element
- 9"/6" Power Boil Elements

JB655EKES

**DISHWASHER WITH FRONT CONTROLS**

- Bottle Jets
- Steam PreWash

GDF610PMJES



GE APPLIANCES

**SAVE 10%**  
ON SELECT CLOSEOUT  
& DISCONTINUED MODELS

**WE SELL IT & SERVICE IT**

*Buying Power* – We are a member of a \$15 Billion buying organization.

The majority of our appliances are priced at or below home improvement store prices. Don't sacrifice quality service before or after the sale. *Buy from a locally owned business!*



GE APPLIANCES

**\$539**

**SAVE \$60!**

**17.5 CU. FT. TOP FREEZER REFRIGERATOR**

- Adjustable Spillproof Glass Shelves
- Upfront Temp. Controls

GTS18GTHWW

REG \$599



GE APPLIANCES

**\$1799**

**SAVE \$600!**

**23.8 CU. FT. FRENCH DOOR REFRIGERATOR**

- Advanced Water Filtration
- Quick Space Shelf

GFE24JMKES

REG \$2399



GE APPLIANCES

**\$1999**

**SAVE \$800!**

**27.8 CU. FT. FRENCH DOOR REFRIGERATOR**

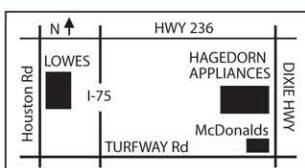
- Turbo Cool and Turbo Freeze Settings
- Twinchill™ Evaporators

GFE28GSKSS

REG \$2799



4432 Dixie Highway • Erlanger, KY 41018 • 859-342-6060



[www.hagedornappliance.com](http://www.hagedornappliance.com)



\*See store for complete details on all offers, financing and rebates. \*\*Employees of retailer, mail-house, associate sponsors and ad agency as well as their family members of the same household are not eligible. Restrictions apply. No purchase necessary. Odds of winning \$10,000 Shopping Spree 1:350,000; \$250 Visa® Gift Card 3:XX,XXX; Additional Discounts on minimum purchase of \$499 and above. Excluding GE Cafe and GE Profile Appliances: \$25 XX,XXX,XXX; \$30 XX,XXX,XXX; \$50 XX,XXX,XXX. Mail piece must be presented to a representative of our store to participate in all offers of this mail piece. Participant must be 18 years of age or older, a legal U.S. Citizen, have a valid U.S. Driver's License and be a recipient of the mail piece via U.S. Mail. Winning numbers are predetermined. Winning numbers will not be disclosed over the telephone. Only valid during event dates and hours. VOID WHERE PROHIBITED BY LAW. ©/™ ©2016. All rights reserved. 03MM364GE\_JanuarySavings\_kelley ©2016 Invigorate Media, LLC. All Rights Reserved. 800-770-5219.

**14 INCHES WIDE  
HUGE!**

11 INCHES TALL

[illegible]

As low as  
**39.9¢**  
Includes Postage

**255% BIGGER** Than our  
**Jumbo Postcard!**





# January Savings Event

JANUARY 15 - JANUARY 25

**12 MONTHS SPECIAL FINANCING!\***

**PROFILE™ PACKAGE REBATE UP TO \$1200\*** VALID 1/11 - 1/25



## PROFILE™ KITCHEN SUITE



**KEURIG® K-CUP BREWING SYSTEM**  
The unexpected convenience of hot single serve brewing at your fridge



**DEEP CLEAN DISHWASHER JETS**  
Powerful jets blast away stuck-on food for silverware that's always spotless

### 27.8 CU. FT. FRENCH DOOR REFRIGERATOR

- TwinChill™ Evaporators
- Full-width, Electronic Temperature-Controlled Drawer with Colored LED Lights

PFE28PSKSS

### 30" FREESTANDING ELECTRIC CONVECTION RANGE

- Edge-To-Edge Cooktop
- Electronic Touch Controls

PB911SJSS

### 2.1 CU. FT. OVER-THE-RANGE SENSOR MICROWAVE OVEN

- Sensor Cooking Controls
- Chef Connect

PVM900SSJSS

### STAINLESS STEEL INTERIOR DISHWASHER

- Hidden Controls
- Reverse Quad Blade Wash Arm

PDT845SSJSS



**SAVE \$650**  
on this SLATE package!

**\$2476**  
PACKAGE PRICE

REG \$3126



### 25.4 CU. FT. SIDE-BY-SIDE REFRIGERATOR

- Advanced Water Filtration
- Adjustable Slide-out Glass Shelves

GSS25GMHES

### 1.7 CU. FT. OVER-THE-RANGE SENSOR MICROWAVE

- Auto and Time Defrost
- Express Cook

JVM617SEFES

### 30" FREESTANDING ELECTRIC CONVECTION RANGE

- 12"/9" Dual Element
- 9"/6" Power Boil Elements

JB655EKES

### DISHWASHER WITH FRONT CONTROLS

- Bottle Jets
- Steam PreWash

GDF610PMJES

**SAVE 10%**  
ON SELECT CLOSEOUT & DISCONTINUED MODELS

# GREAT DEALS ON REFRIGERATORS



GE APPLIANCES  
**\$539**  
SAVE \$60!

**17.5 CU. FT. TOP FREEZER REFRIGERATOR**  
• Adjustable Spillproof Glass Shelves  
• Upfront Temp. Controls  
GTS18GTHWW



GE APPLIANCES  
**\$1799**  
SAVE \$600!

**23.8 CU. FT. FRENCH DOOR REFRIGERATOR**  
• Advanced Water Filtration  
• Quick Space Shelf  
GFE24JMKES



GE APPLIANCES  
**\$1999**  
SAVE \$800!

**27.8 CU. FT. FRENCH DOOR REFRIGERATOR**  
• Turbo Cool and Turbo Freeze Settings  
• Twinchill™ Evaporators  
GFE28GSKSS

Dealer Name  
Street Address  
City, State Zip

POSTMASTER: Please Deliver X/XX, X/XX, X/XX  
**OR CURRENT RESIDENT**

PRESORT STANDARD  
U.S. POSTAGE  
**PAID**  
INVIGORATE  
MEDIA

*Doug Nelson  
115 Mississippi Ave  
Crystal City, MO 63019*

## WE SELL IT & SERVICE IT

*Buying Power – We are a member of a multi Billion buying organization. The majority of our appliances are priced at or below home improvement store prices. Don't sacrifice quality service before or after the sale. Buy from a locally owned business!*

**\$449** GE APPLIANCES **\$449**



SAVE \$200  
ON THE PAIR!

**GE® 3.8 CU.FT. WASHER**  
• Stainless Steel Tub  
• Heavy Duty Agitator  
GTW330ASKWW

**GE® 7.2 CU.FT. ELECTRIC DRYER**  
• Auto Dry  
• Aluminized Alloy Drum  
GTD33EASKWW

**\$599** GE APPLIANCES **\$549**



SAVE \$350  
ON THE PAIR!

**GE® 4.6 CU.FT. TOP LOAD WASHER**  
• Stainless Steel Tub  
• Deep Fill  
GTW680BSJWS

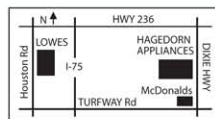
**GE® 7.4 CU.FT. ELECTRIC DRYER**  
• Aluminized Alloy Drum  
• HE Sensor Dry  
GTD68EBSJWS

Artwork Version: 03LM3645GE\_January Savings



**SAVE**  
ON ALL  
BUILT-IN  
APPLIANCES!  
EVEN ON  
SPECIAL  
ORDERS!

SINCE 1941  
**HAGEDORN**  
APPLIANCES



4432 Dixie Highway • Erlanger, KY 41018 • 859-342-6060

[www.hagedornappliance.com](http://www.hagedornappliance.com)

**BRAND  
SOURCE®**

\*See store for complete details of all offers, financing and rebates. ©/TM © 2016. All rights reserved. 03LM3645GE\_JanuarySavings tkelley ©2016 Invigorate Media, LLC. All Rights Reserved. 800-770-5219.

# MODEL LIST : MONSTER MAILER

*\*Some models may not appear on smaller mailers*

January 15 - 25

January Savings Event

<b>Brand</b>	GE Profile	<b>Model #</b>	Kitchen	<b>REG</b>		<b>SALE</b>		<b>SAVE</b>	
<b>Brand</b>		<b>Model #</b>	PFE28PSKSS	<b>REG</b>	\$3199	<b>SALE</b>	\$2499	<b>SAVE</b>	\$700
<b>Brand</b>		<b>Model #</b>	PVM9005SJSS	<b>REG</b>	\$499	<b>SALE</b>	\$399	<b>SAVE</b>	\$100
<b>Brand</b>		<b>Model #</b>	PB911SJSS	<b>REG</b>	\$999	<b>SALE</b>	\$1099	<b>SAVE</b>	\$100
<b>Brand</b>		<b>Model #</b>	PDT845SSJSS	<b>REG</b>	\$1199	<b>SALE</b>	\$1099	<b>SAVE</b>	\$100
<b>Brand</b>	GE	<b>Model #</b>	Kitchen	<b>REG</b>	\$3126	<b>SALE</b>	\$2476	<b>SAVE</b>	\$650
<b>Brand</b>		<b>Model #</b>	GSS25GMHES	<b>REG</b>		<b>SALE</b>		<b>SAVE</b>	
<b>Brand</b>		<b>Model #</b>	JVM6175EFES	<b>REG</b>		<b>SALE</b>		<b>SAVE</b>	
<b>Brand</b>		<b>Model #</b>	JB655EKES	<b>REG</b>		<b>SALE</b>		<b>SAVE</b>	
<b>Brand</b>		<b>Model #</b>	GDF610PMJES	<b>REG</b>		<b>SALE</b>		<b>SAVE</b>	
<b>Brand</b>	GE	<b>Model #</b>	GTW330ASKWW	<b>REG</b>	\$549	<b>SALE</b>	\$449	<b>SAVE</b>	\$100
<b>Brand</b>	GE	<b>Model #</b>	GTD33EASKWW	<b>REG</b>	\$549	<b>SALE</b>	\$449	<b>SAVE</b>	\$100
<b>Brand</b>	GE	<b>Model #</b>	GTW680BSJWS	<b>REG</b>	\$749	<b>SALE</b>	\$599	<b>SAVE</b>	\$150
<b>Brand</b>	GE	<b>Model #</b>	GTD65EBSJWS	<b>REG</b>	\$749	<b>SALE</b>	\$549	<b>SAVE</b>	\$200
<b>Brand</b>	GE	<b>Model #</b>	GTS18GTHWW	<b>REG</b>	\$599	<b>SALE</b>	\$539	<b>SAVE</b>	\$60
<b>Brand</b>	GE	<b>Model #</b>	GFE24JMKES	<b>REG</b>	\$2399	<b>SALE</b>	\$1799	<b>SAVE</b>	\$600
<b>Brand</b>	GE	<b>Model #</b>	GFE28GSKSS	<b>REG</b>	\$2799	<b>SALE</b>	\$1999	<b>SAVE</b>	\$800





**Monster Mailer • Legal Limit Max**

# Order Form

**Fax order form to: 636-794-3223**

Sales: **1-800-770-5219** Doug Nelson or Bill Menkhous

Business Name: \_\_\_\_\_ Contact Name: \_\_\_\_\_  
 Address: \_\_\_\_\_ City: \_\_\_\_\_ State: \_\_\_\_\_ Zip: \_\_\_\_\_  
 Phone: \_\_\_\_\_ Cell: \_\_\_\_\_ Email: \_\_\_\_\_  
 Buying Group Affiliation: \_\_\_\_\_

**Step 1** **Sale Dates**

Indicate your sale dates here:

\_\_\_\_\_

**Step 2** **Please List Artwork Version Number**

Artwork Version in white address panel,  
 ie Version: LL2041WP; 01MM954X)

Indicate number here: \_\_\_\_\_

**Do you want "Scratch Off" Promo?** ☐ Yes ☐ No

**Step 3** Quantity Single Family Homes: **Select One**

Price with Scratch Off Package:

Monster Mailer ☐ 1. 5,000 - \$2,343 ☐ 2. 10,000 - \$3,939 ☐ 1. 5,000 - \$2,493 ☐ 2. 10,000 - \$4,239  
 Legal Limit MAX! ☐ 1. 5,000 - \$2,443 ☐ 2. 10,000 - \$4,139 ☐ 1. 5,000 - \$2,593 ☐ 2. 10,000 - \$4,439

**Additional Mailers, Add:** MONSTER - 37.9¢ each • LEGAL LIMIT MAX - 39.9¢ each

**Step 4** Financing & Special Offers: **All offers are solely the retailer's responsibility.** ie. Financing, Rebates, Free Delivery, etc.

Financing offer terms - # of Months ie. 6, 12, 18 \_\_\_\_\_; With Payments? YES or NO; Minimum Purchase: \$ \_\_\_\_\_;

List your special offers here: \_\_\_\_\_

\_\_\_\_\_

**Step 5** **Signature (REQUIRED):** \_\_\_\_\_ (Your order will not be processed without a signature)

Invigorate Media has no responsibility for, nor may payment be contingent upon, availability of featured merchandise. Invigorate Media shall not be responsible for nondelivery or damage to printed materials owing to acts of God, strikes, shipping failures, timeliness of post office or any other causes beyond its control. Direct mail costs are based on US postal rates as of May 2015 and are subject to change without notice.

**Step 6** Select ONE: ☐ 1. Zip Codes - Complete Below **OR** ☐ 2. Let us run a radius around your store

**Call us for free consultation on selecting your mailing list**

1.	2.	3.	4.	5.
6.	7.	8.	9.	10.

**Pricing Includes: \$50,000\* Household Median Income**

• Single Family Home Mailing List | Monster 10.5" x 17" • Legal Limit Max! 11" x 14" | • Single Family Home Postage

Monster Mailer: Targeted Homeowner Income List OR Dealer's Customer List: Add 5¢  
 Legal Limit Max: Targeted Homeowner Income List OR Dealer's Customer List: Add 7¢

Add'l SCFs: Add \$100

Business Name: \_\_\_\_\_ City: \_\_\_\_\_ State: \_\_\_\_\_

Step  
8

List your model changes below

***Fax 2nd page with your Order Form***

List your model changes below. Models NOT DELETED will remain on your proof. The space allowed for models/images is limited to the direct mail piece selected

1. **DELETE:** Brand \_\_\_\_\_ Model # \_\_\_\_\_ **REPLACE WITH:** Brand \_\_\_\_\_ Model # \_\_\_\_\_  
**CHANGE PRICE TO:** \$ \_\_\_\_\_ and/or **CHANGE SAVE TO:** \$ \_\_\_\_\_
2. **DELETE:** Brand \_\_\_\_\_ Model # \_\_\_\_\_ **REPLACE WITH:** Brand \_\_\_\_\_ Model # \_\_\_\_\_  
**CHANGE PRICE TO:** \$ \_\_\_\_\_ and/or **CHANGE SAVE TO:** \$ \_\_\_\_\_
3. **DELETE:** Brand \_\_\_\_\_ Model # \_\_\_\_\_ **REPLACE WITH:** Brand \_\_\_\_\_ Model # \_\_\_\_\_  
**CHANGE PRICE TO:** \$ \_\_\_\_\_ and/or **CHANGE SAVE TO:** \$ \_\_\_\_\_
4. **DELETE:** Brand \_\_\_\_\_ Model # \_\_\_\_\_ **REPLACE WITH:** Brand \_\_\_\_\_ Model # \_\_\_\_\_  
**CHANGE PRICE TO:** \$ \_\_\_\_\_ and/or **CHANGE SAVE TO:** \$ \_\_\_\_\_
5. **DELETE:** Brand \_\_\_\_\_ Model # \_\_\_\_\_ **REPLACE WITH:** Brand \_\_\_\_\_ Model # \_\_\_\_\_  
**CHANGE PRICE TO:** \$ \_\_\_\_\_ and/or **CHANGE SAVE TO:** \$ \_\_\_\_\_
6. **DELETE:** Brand \_\_\_\_\_ Model # \_\_\_\_\_ **REPLACE WITH:** Brand \_\_\_\_\_ Model # \_\_\_\_\_  
**CHANGE PRICE TO:** \$ \_\_\_\_\_ and/or **CHANGE SAVE TO:** \$ \_\_\_\_\_
7. **DELETE:** Brand \_\_\_\_\_ Model # \_\_\_\_\_ **REPLACE WITH:** Brand \_\_\_\_\_ Model # \_\_\_\_\_  
**CHANGE PRICE TO:** \$ \_\_\_\_\_ and/or **CHANGE SAVE TO:** \$ \_\_\_\_\_
8. **DELETE:** Brand \_\_\_\_\_ Model # \_\_\_\_\_ **REPLACE WITH:** Brand \_\_\_\_\_ Model # \_\_\_\_\_  
**CHANGE PRICE TO:** \$ \_\_\_\_\_ and/or **CHANGE SAVE TO:** \$ \_\_\_\_\_
9. **DELETE:** Brand \_\_\_\_\_ Model # \_\_\_\_\_ **REPLACE WITH:** Brand \_\_\_\_\_ Model # \_\_\_\_\_  
**CHANGE PRICE TO:** \$ \_\_\_\_\_ and/or **CHANGE SAVE TO:** \$ \_\_\_\_\_
10. **DELETE:** Brand \_\_\_\_\_ Model # \_\_\_\_\_ **REPLACE WITH:** Brand \_\_\_\_\_ Model # \_\_\_\_\_  
**CHANGE PRICE TO:** \$ \_\_\_\_\_ and/or **CHANGE SAVE TO:** \$ \_\_\_\_\_
11. **DELETE:** Brand \_\_\_\_\_ Model # \_\_\_\_\_ **REPLACE WITH:** Brand \_\_\_\_\_ Model # \_\_\_\_\_  
**CHANGE PRICE TO:** \$ \_\_\_\_\_ and/or **CHANGE SAVE TO:** \$ \_\_\_\_\_
12. **DELETE:** Brand \_\_\_\_\_ Model # \_\_\_\_\_ **REPLACE WITH:** Brand \_\_\_\_\_ Model # \_\_\_\_\_  
**CHANGE PRICE TO:** \$ \_\_\_\_\_ and/or **CHANGE SAVE TO:** \$ \_\_\_\_\_
13. **DELETE:** Brand \_\_\_\_\_ Model # \_\_\_\_\_ **REPLACE WITH:** Brand \_\_\_\_\_ Model # \_\_\_\_\_  
**CHANGE PRICE TO:** \$ \_\_\_\_\_ and/or **CHANGE SAVE TO:** \$ \_\_\_\_\_