



**invigorate!**  
marketing & media

**100% CO-OP & FREE CO-OP FILING!**

Contact Invigorate Media 800-770-5219

## ***X13 Whirlpool Brands "YEAR END SALE!"***

Targeted Direct Mail is the most Effective Method for Driving Immediate Store Traffic & Sales.

Make ANY Changes to art - Prices/Models/Brands. We will re-approve for 100% co-op!

**Sale Dates December 21 - January 3 OR December 28 - January 3**

**Order Deadline - December 5**

### **Choose from Three Sizes**

1. **The Monster Mailer tri-fold** Arrives in mail 6" x 10.5" and opens to 10.5" x 17" **Only 36.9 Cents.**
2. **The Legal Limit MAX Postcard 11"x 14"** - The Largest Piece of Mail Allowed by Law! **Only 39.9 Cents.**
3. **The Jumbo Card 6" x 11"** Only 34.9 Cents. **NOTE: Jumbo Card - Great for smaller budgets - From \$749 includes everything. See Order form!**

**All orders Include** art with Edits, Single Family Postage, Printing, Our Mailing List with Home Owner Median Incomes to "Target", Addressing & Shipping to Dealer's Local Post Office for In-Home Delivery.

**Option** - Use your store customer list – ask for details.

**We will file your HUB co-op paper work for you if indicated on order form at end of this PDF.**

**Add the "Scratch Off" Promotion to either mailer/3 Cents extra.** – Includes Scratch Off Sticker with Prize Numbers, \$10,000 Group Insurance Policy, (3) Kitchen-Aid Stand Mixers (zero dealer liabilities), and your option to add your own default prizes such as a Free 10-Year Component warranty with purchase - or additional \$10 - \$50 Instant Savings, Mounted Prize Board & extra mailers for walk in traffic.

**Contact 800-770-5219**

Bill Menkhus    bill\_menkhus@invigoratemedia.com    Cell 636-524-1240  
Doug Nelson    doug\_nelson@invigoratemedia.com    Cell 636-578-8130

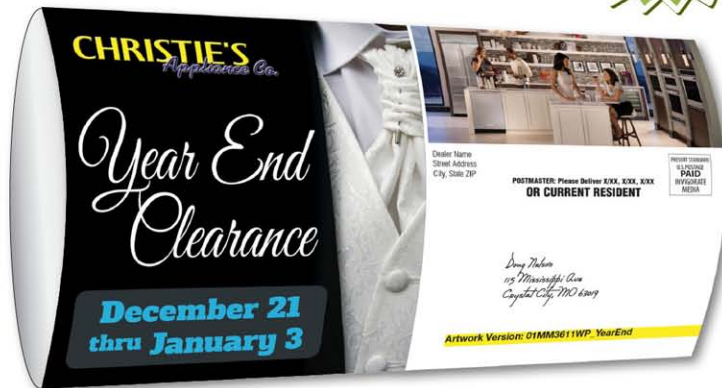
# The Monster Mailer Tri-Fold

Proven by  
Monstrous Results

Arrives in the  
mailbox as  
**6" x 10.5"**  
Opens to  
**10.5" x 17"**

10.5 INCHES WIDE

17 INCHES TALL



**295% BIGGER** Than our  
Jumbo Postcard!

As low as  
**36.9¢** Includes  
Postage





# SAVE

ON ALL BUILT-IN APPLIANCES!  
EVEN ON SPECIAL ORDERS!

Whirlpool MAYTAG  
KitchenAid AMANA

## 12 MONTHS SPECIAL FINANCING!



Whirlpool **4 Piece Kitchen Package!**

MSRP #3136

# \$2332

package price

**SAVE \$804**  
on the entire package!

25 cu.ft. Side-by-Side Refrigerator with SpillGuard™ Glass Shelves  
WRS325FDAM

1.9 cu.ft. Steam Microwave with Sensor Cooking  
WMH32519FS

5.3 cu.ft. Freestanding Electric Range with Fan Convection Cooking  
WFE520S0FS  
WFG520S0FS - Gas Add \$50

Stainless Steel Dishwasher with 1-Hour Wash Cycle  
WDF520PADM

**CHRISTIE'S**  
*Appliance Co.*

# Year End Clearance

**December 21  
thru January 3**

## Scratch & Win™

Match your number in our store to see if you're our grand prize winner!



- \$10,000 Shopping Spree
- KitchenAid® Stand Mixer
- \$25 – \$50 Additional Instant Savings on purchases \$499 and up

Dealer Name  
Street Address  
City, State ZIP

**POSTMASTER: Please Deliver X/XX, X/XX, X/XX  
OR CURRENT RESIDENT**

PRESORT STANDARD  
U.S. POSTAGE  
**PAID**  
INVIGORATE  
MEDIA

*Doug Nelson*  
115 Mississippi Ave  
Crystall City, MO 63019

**Artwork Version: 01MM3611WP\_YearEnd**

# MAYTAG®

## Fingerprint Resistant Stainless Steel Kitchen Package!

MSRP #4366

# \$3132

package price

**SAVE \$1234**  
after savings & \$200 rebate!



25 cu.ft. French Door Refrigerator with Powercold® Feature  
MF12570FEZ

6.4 cu.ft. Electric Range with True Convection and Power Preheat  
MER8800FZ

2.0 cu.ft. Over-the-Range Microwave with Sensor Cooking  
MMV4205FZ

Stainless Steel Tub Dishwasher with PowerBlast™ Cycle  
MDB4949SDZ







**KitchenAid**

UP TO

**\$1600**

BY MAIL WITH PURCHASE OF SELECT KITCHENAID BRAND APPLIANCES\*

VALID NOVEMBER 1–DECEMBER 31, 2016

**Whirlpool**

**MAYTAG**

UP TO

**\$500**

PREPAID CARD BY MAIL WITH PURCHASE OF SELECT WHIRLPOOL & MAYTAG BRAND APPLIANCES\*

VALID DECEMBER 21–JANUARY 3, 2017

**SAVE AN ADDITIONAL 10% ON SELECT CLOSEOUT & DISCONTINUED MODELS**

**Whirlpool**  
HOME APPLIANCES

INVESTED IN  
**AMERICA**

Employing More U.S. Workers  
Than Any Other Major Appliance  
Manufacturer

Designed, Engineered  
& Assembled in the U.S.A.

**Whirlpool**  
Proudly Supports

**Habitat**  
for Humanity

**MAYTAG**  
Proudly Supports

**COOK**  
FOR THE  
CURE



**BOYS & GIRLS CLUBS**  
OF AMERICA

PRESENTED BY  
**KitchenAid**



Load & Go™ Bulk Dispenser holds  
detergent for up to 12 loads\*



**Save \$722**  
on the pair  
after savings & \$100 rebate!

Shown with Optional Pedestals

**Whirlpool**

MSRP \$1199

**\$838**  
each

**4.5 cu.ft. Front Load Washer**  
with Load & Go™ Bulk Dispenser  
WFW92HEFW

**7.4 cu.ft. Electric Dryer** with  
Advanced Moisture Sensing  
WED92HEFW

**We Sell It & Service It**

**BUYING POWER** – We are a member of a \$15 Billion buying organization. The majority of our appliances are priced at or below home improvement store prices. Don't sacrifice quality service before or after the sale. **BUY FROM A LOCALLY OWNED BUSINESS!**

**AMANA**

**\$332** MSRP \$499  
each



**Save \$334**  
on the pair!

**3.5 cu.ft. Top Load Washer**  
with Dual Action  
Agitator  
NTW4516FW

**6.5 cu.ft. Electric Dryer**  
with Automatic  
Dryness Control  
NED4655EW

**Whirlpool**

**\$449** MSRP \$649  
each



**Save \$400**  
on the pair  
after savings & \$100 rebate!

**4.3 cu.ft. HE Top Load Washer**  
with Low-Profile  
Impeller  
WTF5000DW

**7.0 cu.ft. HE Electric Dryer** with  
AccuDry™ Sensor  
Drying System  
WED5000DW

Selling & Servicing Major Appliances in Tucson Since 1956

**CHRISTIE'S**  
Appliance Co.

7255 E. Broadway at S. Kolb • (520) 296-7218



**nationwide**  
marketing group  
**\$15 BILLION**  
**BUYING**  
**POWER**  
We're proud of our association with the largest buying organization in the country, which brings you the combined purchasing power of thousands of retail stores nationwide. This huge buying power is passed along to our customers by means of lower prices every day on the finest name brand products in the world.

\*See store for complete details on all offers, financing and rebates. \*\*Employees of retailer, mail-house, associate sponsors and ad agency as well as their family members of the same household are not eligible. Restrictions apply. No purchase necessary. Odds of winning \$10,000 Shopping Spree: 1:350,000. KitchenAid® Stand Mixer 3-X XXXX. Additional Discounts on minimum purchase of \$499 and above: \$25 XXXXXX, \$30 XXXXXX, \$50 XXXXXX. Mail piece must be presented to a representative of our store to participate in all offers of this mail piece. Participant must be 18 years of age or older, a legal U.S. Citizen, have a valid U.S. Driver's License and be a recipient of the mail piece via U.S. Mail. Winning numbers are predetermined. Winning numbers will not be disclosed over the telephone. Only valid during event dates and hours. VOID WHERE PROHIBITED BY LAW. ©2016. All rights reserved. HUB Pre-Approval XXXXXX. 01MM3611WP. YearEnd cheer! ©2016 Invigorate Media, LLC. All Rights Reserved. 800-770-5219.



# The Legal Limit **MAX!** Postcard

Anything bigger would be criminal.

14 INCHES **WIDE**  
**HUGE!**

**CHRISTIE'S**  
*Appliances Co.*

*Year End Clearance*  
December 21 - January 3

**12 MONTHS SPECIAL FINANCING!**

**Whirlpool 4 Piece Kitchen Package!**  
\$2332 package price  
SAVE \$804

**MAYTAG Fingerprint Resistant Stainless Steel Kitchen Package!**  
\$3132 package price  
SAVE \$1234

**SAVE AN ADDITIONAL 10% ON SELECT CLOSEOUT & DISCONTINUED MODELS**

**Whirlpool**  
Load & Go® Bulk Dispenser  
\$838 each  
Save \$722 on the pair

**Whirlpool**  
4.5 cu. ft. Front Load Washer with Load & Go® Bulk Dispenser  
\$449 each  
Save \$334 on the pair

**Whirlpool**  
7.4 cu. ft. Electric Dryer with Sensor Moisture Sensing  
\$449 each  
Save \$400 on the pair

**AMANA**  
\$332 each  
Save \$334 on the pair

**Whirlpool**  
\$449 each  
Save \$400 on the pair

**Scratch & Win**  
• \$10,000 Shopping Spree  
• KitchenAid® Stand Mixer  
• \$25 - \$50 Additional Instant Savings

**SAVE ON ALL BUILT-IN APPLIANCES!**  
EVEN ON SPECIAL ORDERS!

**We Sell It & Service It**  
BUYING POWER - We are a member of a \$15 Billion buying organization. The majority of our appliances are priced at or below home improvement store prices. Don't sacrifice quality service before or after the sale. BUY FROM A LOCALLY OWNED BUSINESS!

11 INCHES TALL

The **LARGEST** piece of mail the US Postal Service will allow!

As low as  
**39.9¢**  
Includes Postage

**255% BIGGER** Than our Jumbo Postcard!

**CHRISTIE'S**  
*Appliance Co.*

# Year End Clearance

**December 21 – January 3**



**12 MONTHS SPECIAL FINANCING!**

**KitchenAid**

UP TO **\$1600**

BY MAIL WITH PURCHASE OF SELECT KITCHENAID BRAND APPLIANCES\*

VALID NOVEMBER 1–DECEMBER 31, 2016

**Whirlpool MAYTAG®**

UP TO **\$500**

PREPAID CARD BY MAIL WITH PURCHASE OF SELECT WHIRLPOOL & MAYTAG BRAND APPLIANCES\*

VALID DECEMBER 21–JANUARY 3, 2017

**Whirlpool® 4 Piece Kitchen Package!**

MSRP \*3136

**\$2332**  
package price

**SAVE \$804**  
on the entire package!



**25 cu.ft. Side-by-Side Refrigerator** with SpillGuard™ Glass Shelves  
WRS325FDAM

**1.9 cu.ft. Steam Microwave** with Sensor Cooking  
WMH32519FS

**5.3 cu.ft. Freestanding Electric Range** with Fan Convection Cooking  
WFE520S0FS  
WFG520S0FS - Gas Add \$50

**Stainless Steel Dishwasher** with 1-Hour Wash Cycle  
WDF520PADM

**MAYTAG®**

**Fingerprint Resistant Stainless Steel Kitchen Package!**

MSRP \*4366

**\$3132**  
package price

**SAVE \$1234**  
after savings & \*200 rebate!



**25 cu.ft. French Door Refrigerator** with PowerCold® Feature  
MF2570FEZ

**6.4 cu.ft. Electric Range** with True Convection and Power Preheat  
MER8800FZ

**2.0 cu.ft. Over-the-Range Microwave** with Sensor Cooking  
MMV4205FZ

**Stainless Steel Tub Dishwasher** with PowerBlast™ Cycle  
MD84949SDZ



**SAVE AN ADDITIONAL 10% ON SELECT CLOSEOUT & DISCONTINUED MODELS**



**Whirlpool**  
INVESTED IN  
**AMERICA**  
Employing More U.S. Workers  
Than Any Other Major Appliance  
Manufacturer  
Designed, Engineered  
& Assembled in the U.S.A.

Whirlpool  
Proudly Supports

Habitat  
for Humanity

MAYTAG  
Proudly Supports

COOK  
FOR THE  
CURE  
PRODUCED BY  
KitchenAid

BOYS & GIRLS CLUBS  
OF AMERICA



Load & Go™ Bulk  
Dispenser holds detergent  
for up to 12 loads\*



**Save \$722**  
on the pair  
after savings & \*100 rebate!

Shown with Optional Pedestals

**Whirlpool**

MSRP #1199

**\$838**  
each

**4.5 cu. ft. Front Load Washer**  
with Load & Go™ Bulk Dispenser  
WFW92HEFW

**7.4 cu. ft. Electric Dryer** with  
Advanced Moisture Sensing  
WED92HEFW

Dealer Name  
Street Address  
City, State Zip

**POSTMASTER: Please Deliver X/XX, X/XX, X/XX  
OR CURRENT RESIDENT**

PRESORT STANDARD  
U.S. POSTAGE  
**PAID**  
INVIGORATE  
MEDIA

*Doug Nelson  
115 Mississippi Ave  
Crystal City, MO 63019*

**Artwork Version: 01LM3610WP\_YearEnd**

**AMANA**

**\$332** each  
MSRP \$499

**Save \$334**  
on the pair!



**3.5 cu. ft. Top Load  
Washer** with Dual  
Action Agitator  
NTW4516FW

**6.5 cu. ft. Electric  
Dryer** with Automatic  
Dryness Control  
NED4655EW

**Whirlpool**

**\$449** each  
MSRP \$649

**Save \$400**  
on the pair  
after savings & \*100 rebate!



**4.3 cu. ft. HE Top  
Load Washer** with  
Low-Profile Impeller  
WTW53000DW

**7.0 cu. ft. HE Electric  
Dryer** with AccuDry™  
Sensor Drying System  
WED5000DW

Selling & Servicing Major Appliances in Tucson Since 1956

**CHRISTIE'S**  
Appliance Co.

**7255 E. Broadway at S. Kolb • (520) 296-7218**

S Kolb Rd



East Broadway

**nationwide**  
marketing group  
**\$15 BILLION**  
**BUYING**  
**POWER**

We're proud of our association with the  
largest buying organization in the country,  
which brings you the combined  
purchasing power of thousands of retail  
stores nationwide. This huge buying  
power is passed along to our customers by  
means of lower prices every day on the  
finest name brand products in the world.

*Year End Clearance*  
**December 21 – January 3**

**SAVE**  
ON ALL **BUILT-IN**  
**APPLIANCES!**  
EVEN ON SPECIAL ORDERS!

**Whirlpool MAYTAG**  
**KitchenAid AMANA**

**We Sell It & Service It**

**BUYING POWER** – We are a member of a \$15 Billion buying  
organization. The majority of our appliances are priced at or below home  
improvement store prices. Don't sacrifice quality service before or  
after the sale. **BUY FROM A LOCALLY OWNED BUSINESS!**

\*See store for complete details of all offers, financing and rebates. ®/™ © 2016. All rights reserved. HUB Pre-Approval XXXXXX. 01LM3610WP\_YearEnd chertiff ©2016  
Invigorate Media, LLC. All Rights Reserved. 800-770-5219.

# The Jumbo Postcard



**CHRISTIE'S**  
*Appliance Co.*

# Year End Clearance

**December 21  
thru January 3**

**12 MONTHS  
SPECIAL FINANCING!**



**MAYTAG®**

**Fingerprint Resistant  
Stainless Steel Kitchen Package!**

**\$3132**

MSRP \$4366

**package  
price**

**SAVE \$1234**  
after savings & \$200 rebate!

**10 YEAR**  
LIMITED PARTS  
WARRANTY

**25 cu.ft. French Door Refrigerator**  
with Powercold® Feature  
MFI2570FEZ

**2.0 cu.ft. Over-the-Range  
Microwave** with Sensor Cooking  
MMV4205FZ

**6.4 cu.ft. Electric Range** with  
True Convection and Power Preheat  
MER8800FZ

**Stainless Steel Tub Dishwasher**  
with PowerBlast™ Cycle  
MDB4949SDZ



**SAVE AN ADDITIONAL 10%**  
ON SELECT CLOSEOUT & DISCONTINUED MODELS



Load & Go™ Bulk Dispenser holds detergent for up to 12 loads\*

Whirlpool

MSRP \$1199

**\$838**  
each

**Save \$722**  
on the pair  
after savings & \$100 rebate!



Shown with Optional Pedestals

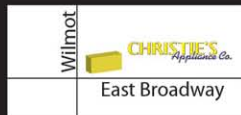
**4.5 cu.ft. Front Load Washer**  
with Load & Go™ Bulk Dispenser  
WFW92HEFW

**7.4 cu.ft. Electric Dryer** with  
Advanced Moisture Sensing  
WED92HEFW

Selling & Servicing Major Appliances in Tucson Since 1956

**CHRISTIE'S**  
Appliance Co.

6355 E. Broadway at Wilmot • (520) 296-7218



\*See store for complete details of all offers, financing and rebates. ©/TM © 2016. All rights reserved. HUB Pre-Approval XXXXXX.  
01JP3612WP\_YearEnd cheifert ©2016 Invigorate Media, LLC. All Rights Reserved. 800-770-5219.

**KitchenAid**

UP TO

**\$1600**

BY MAIL WITH PURCHASE  
OF SELECT KITCHENAID  
BRAND APPLIANCES\*

VALID NOVEMBER 1–DECEMBER 31, 2016

Whirlpool **MAYTAG**

UP TO

**\$500**

PREPAID CARD BY MAIL WITH  
PURCHASE OF SELECT WHIRLPOOL  
& MAYTAG BRAND APPLIANCES\*

VALID DECEMBER 21–JANUARY 3, 2017

Dealer Name  
Street Address  
City, State ZIP

**POSTMASTER: Please Deliver X/XX, X/XX, X/XX  
OR CURRENT RESIDENT**

PRESORT STANDARD  
U.S. POSTAGE  
**PAID**  
INVIGORATE  
MEDIA

*Doug Nelson*  
115 Mississippi Ave  
Crystat City, MO 63019

**Artwork Version: 01JP3612WP\_YearEnd**



# Alternate Jumbo Card

**CHRISTIE'S**  
*Appliance Co.*

**3 DAYS ONLY!**

*Year End*  
**PRIVATE SALE**  
*Event*

THURSDAY • FRIDAY • SATURDAY

**DECEMBER 29<sup>TH</sup> – 31<sup>ST</sup>**

 **Whirlpool**

**MAYTAG**

**AMANA**

**KitchenAid**

 **Whirlpool**

**MAYTAG**

RECEIVE UP TO A

**\$500**

**MasterCard® Prepaid Card** by mail with purchase of select Whirlpool or Maytag Brand Appliances. Valid December 21–January 3, 2017\*

**KitchenAid**

RECEIVE UP TO A

**\$1600**

**MasterCard® Prepaid Card** by mail with purchase of select KitchenAid Brand Appliances. Valid November 1–December 31, 2016\*



Dear Friends & Family,

Take good care of this card! It entitles you to take part in our **Year End Private Sale Event** at **Christie's Appliance** from **Thursday thru Saturday, December 29th-31st.**

**For 3 Days ONLY** you will have an opportunity to take advantage of our **BEST DEALS of the Year!** Receive our **Lowest Prices** on all brands including Maytag®, Whirlpool®, KitchenAid® & Amana®. Now is the time to save on every Laundry & Kitchen Appliance. For example...in addition to our Year's Lowest Prices, **Receive up to a \$1,600 Rebate** on select KitchenAid® appliances!\*

**SAVE BIG** on select closeout and discontinued merchandise.

This **PRIVATE SALE** will NOT be advertised anywhere else. Discounted prices will only be available during these sale days.

As always, we are there to serve you after the sale.

Hope to see you then!

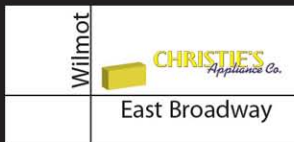
*Christie's Appliance Staff*



Selling & Servicing Major Appliances in Tucson Since 1956

**CHRISTIE'S**  
*Appliance Co.*

**6355 E. Broadway at Wilmot • (520) 296-7218**



\*See store for complete details of all offers, financing and rebates. ©/™ © 2016. All rights reserved. HUB Pre-Approval XXXXX. JP3622WP\_YearEnd cheitert ©2016 Invigorate Media, LLC. All Rights Reserved. 800-770-5219.

# 12 MONTHS SPECIAL FINANCING!\*



Dealer Name  
Street Address  
City, State Zip

**POSTMASTER: Please Deliver X/XX, X/XX, X/XX  
OR CURRENT RESIDENT**

PRESORT STANDARD  
U.S. POSTAGE  
**PAID**  
INVIGORATE  
MEDIA

*Doug Nelson*  
*115 Mississippi Ave*  
*Crystat City, MO 63019*

**Artwork Version: JP3622WP\_YearEnd**

# MODEL LIST : MONSTER MAILER

*\*Some models may not appear on smaller mailers*

Dec 21 - Jan 3  
Year End Clearance

Brand	Whirlpool Kitchen Package	MSRP	\$3136	SALE PRICE	\$2332 <i>Can go as low as \$2099</i>
Brand	Model #	WRS325FDAM	MSRP	SALE PRICE	
Brand	Model #	WFE520S0FS or WFG520S0FS	SALE PRICE	Add \$50 for Gas	
Brand	Model #	WMH32519FS	MSRP	SALE PRICE	
Brand	Model #	WDF520PADM	MSRP	SALE PRICE	
Brand	Maytag Kitchen Package	MSRP	\$4366	SALE PRICE	\$3132 <i>(After \$200 rebate)</i> <i>Can go as low as \$2999</i>
Brand	Model #	MFI2570FEZ	MSRP	SALE PRICE	
Brand	Model #	MER8800FZ	MSRP	SALE PRICE	
Brand	Model #	MMV4205FZ	MSRP	SALE PRICE	
Brand	Model #	MDB4949SDZ	MSRP	SALE PRICE	
Brand	Whirlpool	Model #	WFW92HEFW	MSRP	\$1199 SALE PRICE \$838 <i>(After \$100 pair rebate)</i>
Brand	Whirlpool	Model #	WED92HEFW	MSRP	\$1199 SALE PRICE \$838
Brand	Amana	Model #	NTW4516FW	MSRP	\$499 SALE PRICE \$332
Brand	Amana	Model #	NED4655EW	MSRP	\$499 SALE PRICE \$332
Brand	Whirlpool	Model #	WTW5000DW	MSRP	\$649 SALE PRICE \$449 <i>(After \$100 pair rebate)</i>
Brand	Whirlpool	Model #	WED5000DW	MSRP	\$649 SALE PRICE \$449





**Monster Mailer • Legal Limit Max • Jumbo Postcard**

# Order Form

**Fax order form to: 636-794-3223**

Sales: **1-800-770-5219** Doug Nelson or Bill Menkhous

Business Name: \_\_\_\_\_ Contact Name: \_\_\_\_\_

Address: \_\_\_\_\_ City: \_\_\_\_\_ State: \_\_\_\_\_ Zip: \_\_\_\_\_

Phone: \_\_\_\_\_ Cell: \_\_\_\_\_ Email: \_\_\_\_\_

Buying Group Affiliation: \_\_\_\_\_ **Whirlpool Dealers** - Want us to file your ACB co-op paperwork on your behalf?: ☐ YES! List Whirlpool Rep Name: \_\_\_\_\_ **Hierarchy Customer Number:** \_\_\_\_\_

**Step 1**

## Sale Date:

Indicate your sale date here: \_\_\_\_\_

**Step 2**

## Please List Artwork Version Number

Artwork Version in white address panel, ie Version: LL2041WP; 01MM954X)

Indicate number here: \_\_\_\_\_

**Do you want "Scratch Off" Promo?** ☐ Yes ☐ No **(Scratch Off Promo: Add 3 cents per mailer)**

**Step 3**

## Quantity Single Family Homes: **Select One**

Monster Mailer ☐ 1. 5,000 - \$2,293 ☐ 2. 10,000 - \$3,839

Legal Limit MAX! ☐ 1. 5,000 - \$2,443 ☐ 2. 10,000 - \$4,139

## Jumbo Postcard Pricing:

☐ 1. 1,000 - \$749 ☐ 2. 2,000 - \$1,349

☐ 3. 3,000 - \$1,749 ☐ 4. 4,000 - \$2,049

☐ 5. 5,000 - \$2,193 ☐ 6. 10,000 - \$3,639

**Additional Mailers, ADD:** MONSTER - 36.9¢ each

LEGAL LIMIT MAX - 39.9¢ each • JUMBO POSTCARD - 34.9¢ each (on quantities over 5,000)

**Step 4**

**Financing & Special Offers: All offers are solely the retailer's responsibility.** ie. Financing, Rebates, Free Delivery, etc.

Financing offer terms - # of Months ie. 6, 12, 18 \_\_\_\_\_; With Payments? YES or NO; Minimum Purchase: \$ \_\_\_\_\_;

Finance Company Synchrony; APR \_\_\_\_\_%

List your special offers here: \_\_\_\_\_

**Step 5**

**Signature (REQUIRED):** \_\_\_\_\_ (Your order will not be processed without a signature)

Invigorate Media has no responsibility for, nor may payment be contingent upon, availability of featured merchandise. Invigorate Media shall not be responsible for nondelivery or damage to printed materials owing to acts of God, strikes, shipping failures, timeliness of post office or any other causes beyond its control. Direct mail costs are based on US postal rates as of May 2015 and are subject to change without notice.

**Step 6**

Select ONE: ☐ 1. Zip Codes - Complete Below **OR** ☐ 2. Let us run a radius around your store

**Call us for free consultation on selecting your mailing list**

1.	2.	3.	4.	5.
6.	7.	8.	9.	10.

## Pricing Includes: \$50,000\* Household Median Income

• Single Family Home Mailing List

Monster 10.5" x 17" • Legal Limit Max! 11" x 14" • Jumbo Postcard 6" x 11"

• Single Family Home Postage

Monster Mailer/Jumbo Postcard: Targeted Homeowner Income List OR Dealer's Customer List: Add 5¢  
Legal Limit Max: Targeted Homeowner Income List OR Dealer's Customer List: Add 7¢

Add'l SCFs: Add \$100

Business Name: \_\_\_\_\_ City: \_\_\_\_\_ State: \_\_\_\_\_

Step  
8

List your model changes below

***Fax 2nd page with your Order Form***

List your model changes below. Models NOT DELETED will remain on your proof. The space allowed for models/images is limited to the direct mail piece selected

1. **DELETE:** Brand \_\_\_\_\_ Model # \_\_\_\_\_ **REPLACE WITH:** Brand \_\_\_\_\_ Model # \_\_\_\_\_  
**CHANGE PRICE TO:** \$ \_\_\_\_\_ and/or **CHANGE SAVE TO:** \$ \_\_\_\_\_
2. **DELETE:** Brand \_\_\_\_\_ Model # \_\_\_\_\_ **REPLACE WITH:** Brand \_\_\_\_\_ Model # \_\_\_\_\_  
**CHANGE PRICE TO:** \$ \_\_\_\_\_ and/or **CHANGE SAVE TO:** \$ \_\_\_\_\_
3. **DELETE:** Brand \_\_\_\_\_ Model # \_\_\_\_\_ **REPLACE WITH:** Brand \_\_\_\_\_ Model # \_\_\_\_\_  
**CHANGE PRICE TO:** \$ \_\_\_\_\_ and/or **CHANGE SAVE TO:** \$ \_\_\_\_\_
4. **DELETE:** Brand \_\_\_\_\_ Model # \_\_\_\_\_ **REPLACE WITH:** Brand \_\_\_\_\_ Model # \_\_\_\_\_  
**CHANGE PRICE TO:** \$ \_\_\_\_\_ and/or **CHANGE SAVE TO:** \$ \_\_\_\_\_
5. **DELETE:** Brand \_\_\_\_\_ Model # \_\_\_\_\_ **REPLACE WITH:** Brand \_\_\_\_\_ Model # \_\_\_\_\_  
**CHANGE PRICE TO:** \$ \_\_\_\_\_ and/or **CHANGE SAVE TO:** \$ \_\_\_\_\_
6. **DELETE:** Brand \_\_\_\_\_ Model # \_\_\_\_\_ **REPLACE WITH:** Brand \_\_\_\_\_ Model # \_\_\_\_\_  
**CHANGE PRICE TO:** \$ \_\_\_\_\_ and/or **CHANGE SAVE TO:** \$ \_\_\_\_\_
7. **DELETE:** Brand \_\_\_\_\_ Model # \_\_\_\_\_ **REPLACE WITH:** Brand \_\_\_\_\_ Model # \_\_\_\_\_  
**CHANGE PRICE TO:** \$ \_\_\_\_\_ and/or **CHANGE SAVE TO:** \$ \_\_\_\_\_
8. **DELETE:** Brand \_\_\_\_\_ Model # \_\_\_\_\_ **REPLACE WITH:** Brand \_\_\_\_\_ Model # \_\_\_\_\_  
**CHANGE PRICE TO:** \$ \_\_\_\_\_ and/or **CHANGE SAVE TO:** \$ \_\_\_\_\_
9. **DELETE:** Brand \_\_\_\_\_ Model # \_\_\_\_\_ **REPLACE WITH:** Brand \_\_\_\_\_ Model # \_\_\_\_\_  
**CHANGE PRICE TO:** \$ \_\_\_\_\_ and/or **CHANGE SAVE TO:** \$ \_\_\_\_\_
10. **DELETE:** Brand \_\_\_\_\_ Model # \_\_\_\_\_ **REPLACE WITH:** Brand \_\_\_\_\_ Model # \_\_\_\_\_  
**CHANGE PRICE TO:** \$ \_\_\_\_\_ and/or **CHANGE SAVE TO:** \$ \_\_\_\_\_
11. **DELETE:** Brand \_\_\_\_\_ Model # \_\_\_\_\_ **REPLACE WITH:** Brand \_\_\_\_\_ Model # \_\_\_\_\_  
**CHANGE PRICE TO:** \$ \_\_\_\_\_ and/or **CHANGE SAVE TO:** \$ \_\_\_\_\_
12. **DELETE:** Brand \_\_\_\_\_ Model # \_\_\_\_\_ **REPLACE WITH:** Brand \_\_\_\_\_ Model # \_\_\_\_\_  
**CHANGE PRICE TO:** \$ \_\_\_\_\_ and/or **CHANGE SAVE TO:** \$ \_\_\_\_\_
13. **DELETE:** Brand \_\_\_\_\_ Model # \_\_\_\_\_ **REPLACE WITH:** Brand \_\_\_\_\_ Model # \_\_\_\_\_  
**CHANGE PRICE TO:** \$ \_\_\_\_\_ and/or **CHANGE SAVE TO:** \$ \_\_\_\_\_

From: [coop@whirlpoolhub.com](mailto:coop@whirlpoolhub.com) [mailto:[coop@whirlpoolhub.com](mailto:coop@whirlpoolhub.com)]  
Sent: Thursday, November 17, 2016 4:14 PM  
To: [steven\\_menkhus@invigoratemedias.com](mailto:steven_menkhus@invigoratemedias.com)  
Subject: Whirlpool Corporation Advertising Compliance Review Approved

000INVIGPA

Your Reference Comments: SALE DATE ENDS 1/3/17

The advertising you submitted for a Compliance Review has been approved. When submitting your claim for Co-Op reimbursement, please reference the Advertising Compliance Review Request Number below:

Compliance Review Request Number: 139997

For details, please visit The HUB at [whirlpoolhub.com](http://whirlpoolhub.com)

Please be aware that any changes to the advertising content or dates will void this Advertising Compliance Review approval.

If you have questions about the policy and/or interpretation with regards to your advertisements, please contact us. While dealer alone shall determine advertising and selling prices, Co-Op funds are subject to compliance with the policy.

Thank you for your support of Whirlpool Corporation and its portfolio of brands.

Have Questions? Call your Concierge at 1-855-458-5446 (Option 3) or email us at [coop@whirlpoolhub.com](mailto:coop@whirlpoolhub.com).